

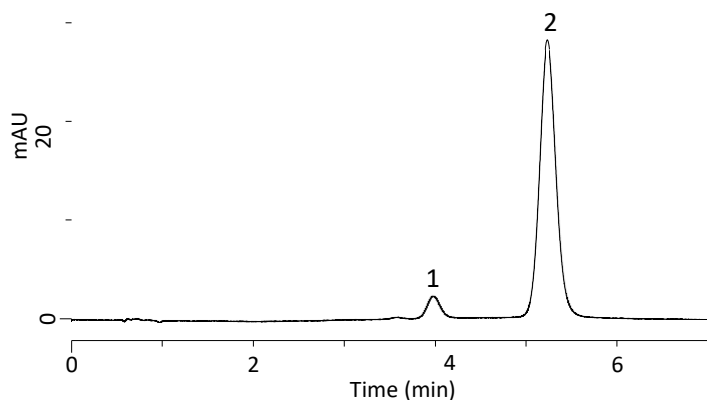
Both amlodipine and losartan potassium are sold worldwide as drug for hypertension. Combination drug containing the two is also studied.

In this note, chromatograms of simultaneous analysis of amlodipine and losartan were shown under two different HPLC condition using Inertsil ODS-4. Condition 1 is based on the assay of amlodipine besylate tablets of United States Pharmacopeia (USP). Condition 2 is a method using eluent of simpler composition. Application for each individual ingredient is also shown in LC technical note No.98 and No.126.

HPLC Condition 1

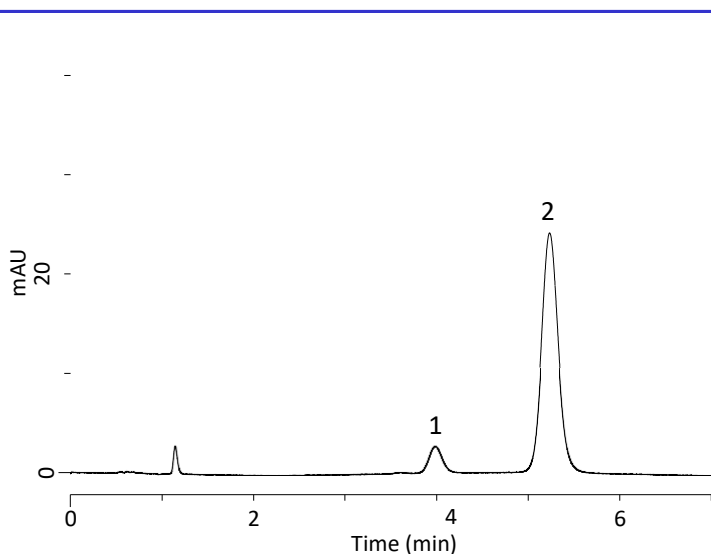
Standard Solution

- 1. Amlodipine Besylate (5 mg/L)
- 2. Losartan Potassium (50 mg/L)

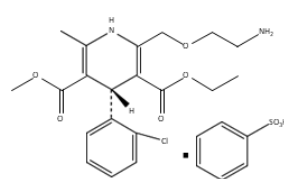


Tablet Sample

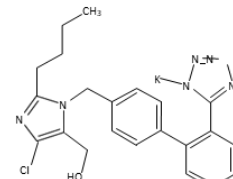
The sample concentration was adjusted to 5 mg/L and 50 mg/L as amlodipine and losartan potassium, respectively.



Chemical Structure



Amlodipine Besylate



Losartan Potassium

Structures are created using Chemistry 4-D Draw which is provided by ChemInnovation Software, Inc.

Conditions

Column	: Inertsil ODS-4 HP (3 μ m, 50 x 4.6 mm I.D.)
Cat. No.	: 5020-14068
Eluent	: A) CH ₃ OH B) CH ₃ CN C) 0.7 % Triethylamine (pH 3.0, H ₃ PO ₄) A/B/C = 7/3/10, v/v/v
Flow rate	: 1.0 mL/min
Column Temp.	: 25 °C
Detection	: UV 237 nm
Injection Vol.	: 5 μ L

Example of Pretreatment Method for Tablet Sample

Sample

- Grind tablet into powder
- Weigh the powder equivalent to one tablet

Extraction

- Add diluent*
- Sonication extraction for 5 min
- Make up to 100 mL with diluent

Filtration

- 0.45 μ m membrane filter

Dilution

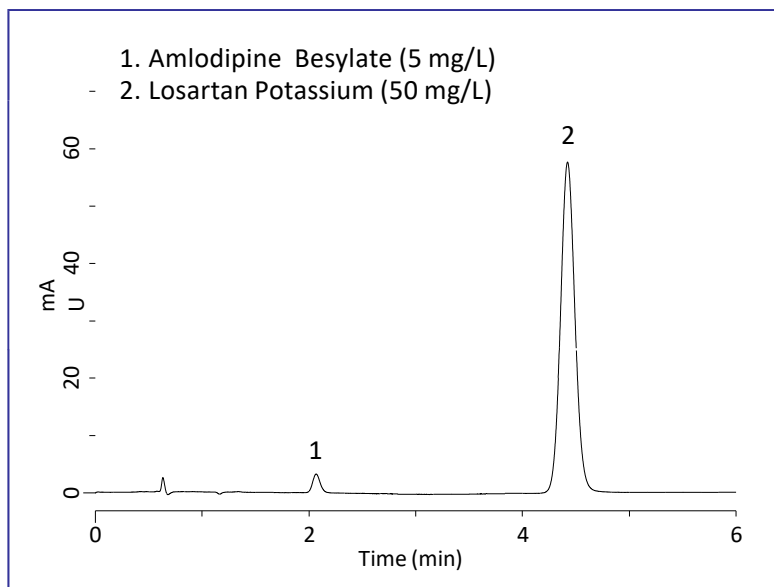
- Adjust the concentration of amlodipine and losartan potassium to 5 mg/L and 50 mg/L, respectively, by adding diluent.

HPLC

* Diluent: eluent

HPLC Condition 2

Standard Solution



Conditions

Column	: Inertsil ODS-4 HP (3 μ m, 50 x 4.6 mm I.D.)
Cat. No.	: 5020-14068
Eluent	: A) CH ₃ CN B) 0.02 % Triethylamine (pH 2.5, H ₃ PO ₄) A/B =35/65, v/v
Flow rate	: 1.0 mL/min
Column Temp.	: 30 °C
Detection	: UV 226 nm
Injection Vol.	: 5 μ L

Example of Pretreatment Method for Tablet Sample

Sample

- Grind tablet into powder
- Weigh the powder equivalent to one tablet

Extraction

- Add diluent**
- Sonication extraction for 5 min
- Make up to 100 mL with diluent

Filtration

- 0.45 μ m membrane filter

Dilution

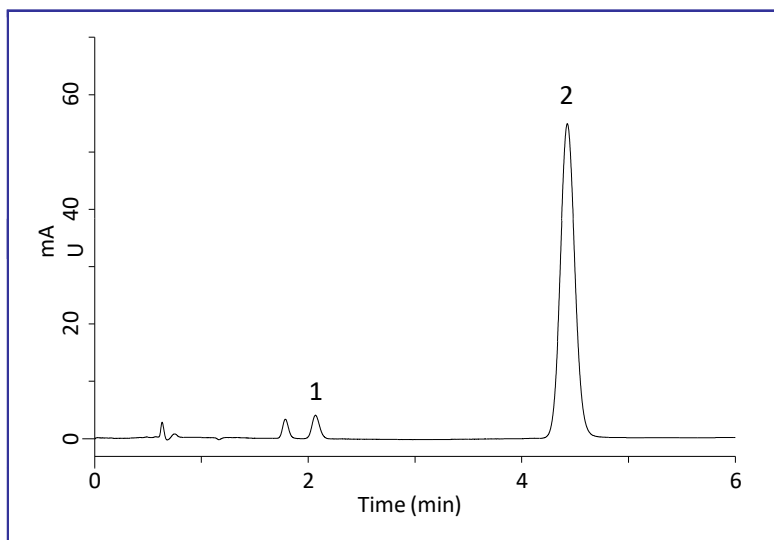
- Adjust the concentration of amlodipine and losartan potassium to 5 mg/L and 50 mg/L, respectively, by adding diluent

HPLC

** Diluent: A/B = 50/50, v/v

Tablet Sample

The sample concentration was adjusted to 5 mg/L and 50 mg/L as amlodipine and losartan potassium, respectively.



GL Sciences disclaims any and all responsibility for any injury or damage which may be caused by this data directly or indirectly. We reserve the right to amend this information or data at any time and without any prior announcement.

GL Sciences, Inc. Japan

22-1 Nishishinjuku 6-Chome
Shinjuku-ku, Tokyo,
163-1130, Japan
Phone: +81-3-5323-6620
Fax: +81-3-5323-6621
Email: world@glsciences.com
Web: www.glsciences.com

GL Sciences B.V.

De Sleutel 9
5652 AS Eindhoven
The Netherlands
Phone: +31 (0)40 254 95 31
Email: info@glsciences.eu
Web: www.glsciences.eu

GL Sciences (ShangHai) Ltd.

Tower B, Room 2003,
Far East International Plaza,
NO,317 Xianxia Road,
Changning District.
Shanghai, China P.C. 200032
Phone: +86 (0)21-6278-2272
Email: contact@glsciences.com.cn
Web: www.glsciences.com.cn

GL Sciences, Inc. USA

4733 Torrance Blvd. Suite 255
Torrance, CA 90503
Phone: 310-265-4424
Fax: 310-265-4425
Email: info@glsciencesinc.com
Web: www.glsciencesinc.com

International Distributors

Visit our Website at:

<https://www.glsciences.com/company/distributor.html>