

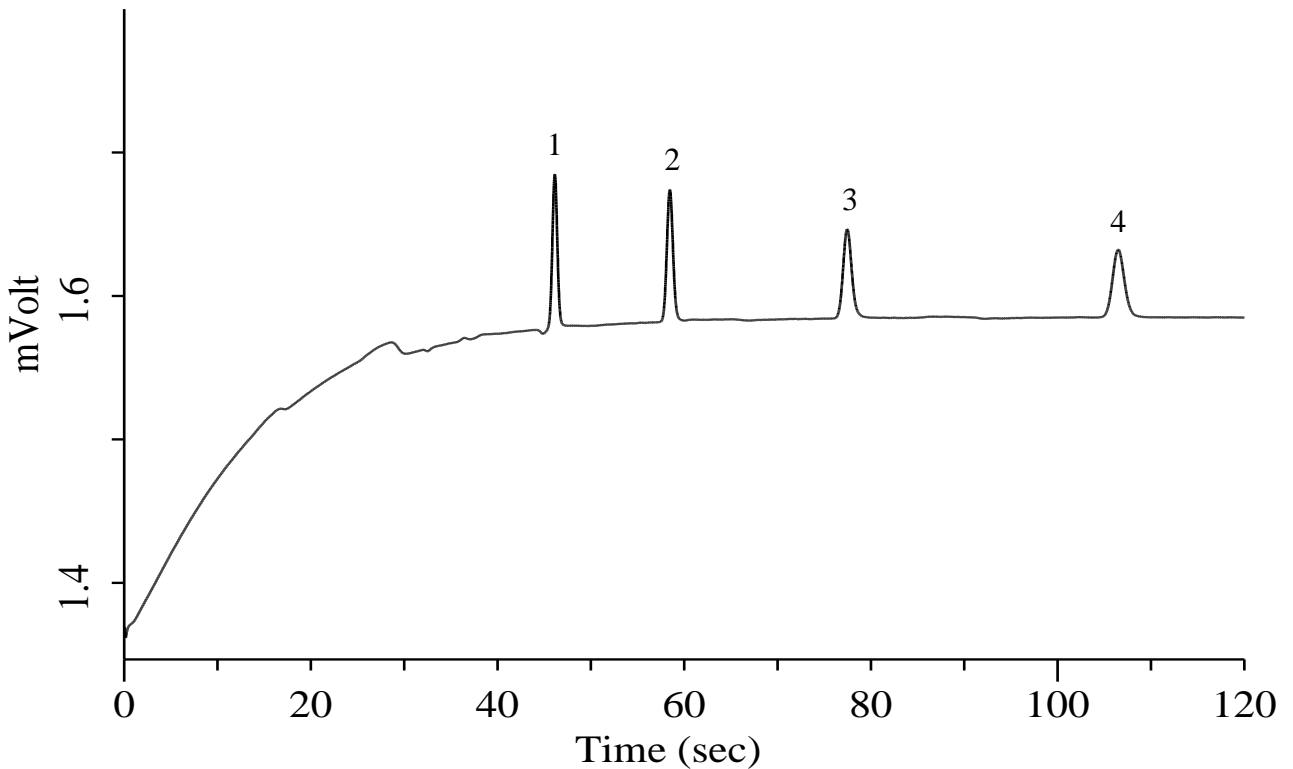
## Inorganic gases (O<sub>2</sub>, N<sub>2</sub>, Methane, CO)

### Specification

One GC Channel

#### ► Option

Backflush (BF)



### Conditions

**System** : Micro GC  
**Column** : Molsieve 5A 10 m + BF 3 m  
**BF Time** : 20 sec  
**Column Temp.** : 100 °C  
**Carrier Gas** : He 170 kPa  
**Inject Time** : 40 msec

### Analyte:

1. Oxygen (O<sub>2</sub>) 100 ppm (v/v)  
 2. Nitrogen (N<sub>2</sub>) 100 ppm (v/v)  
 3. Methane (CH<sub>4</sub>) 100 ppm (v/v)  
 4. Carbon monoxide (CO) 100 ppm (v/v)

Balance Gas He