

# InertSearch for GC

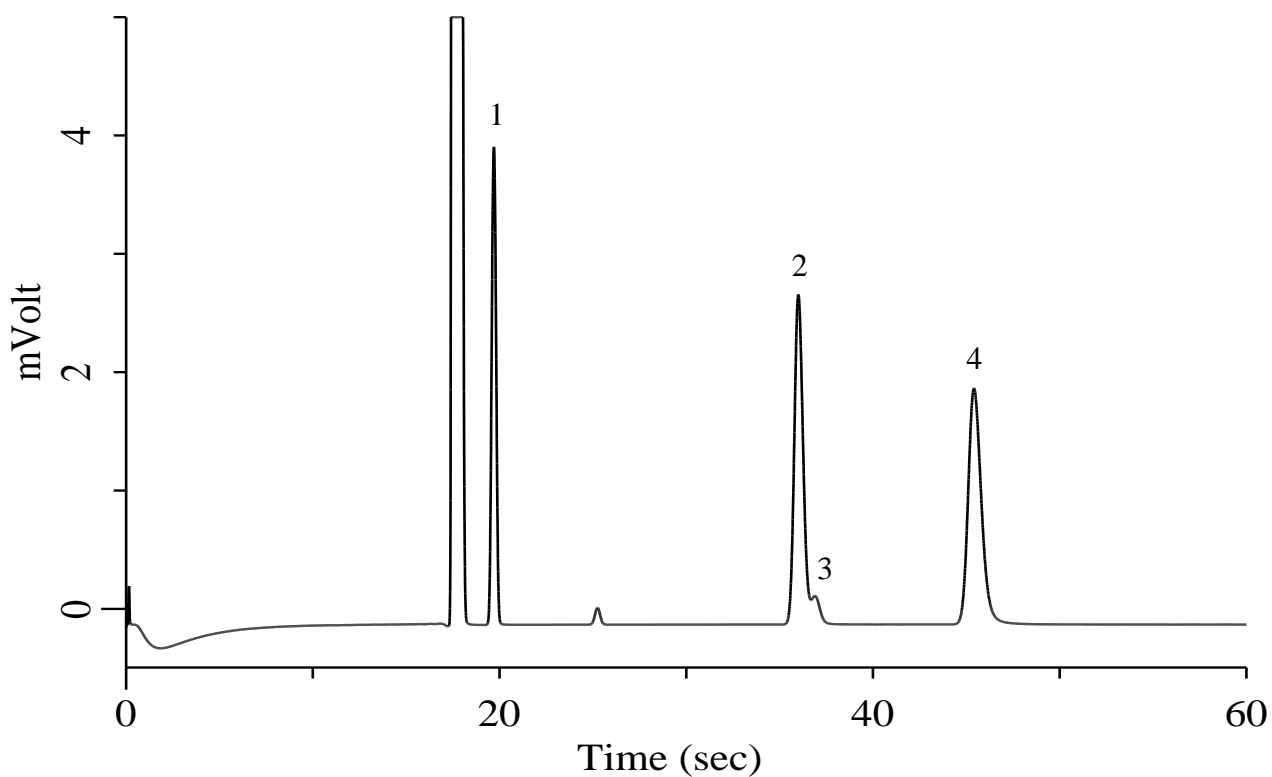
Micro GC Applications

## Hydrocarbons C1-C2

Data No. MA008-0000

### Specification

One GC Channel



### Conditions

System : Micro GC  
Column : PoraPLOT Q 10 m  
Column Temp. : 40 °C  
Carrier Gas : He 200 kPa  
Inject Time : 40 msec

### Analyte:

1. Methane (CH <sub>4</sub> )	1000 ppm (v/v)
2. Ethylene (C <sub>2</sub> H <sub>4</sub> )	1000 ppm (v/v)
3. Acetylene (C <sub>2</sub> H <sub>2</sub> )	100 ppm (v/v)
4. Ethane (C <sub>2</sub> H <sub>6</sub> )	1000 ppm (v/v)

Balance Gas He