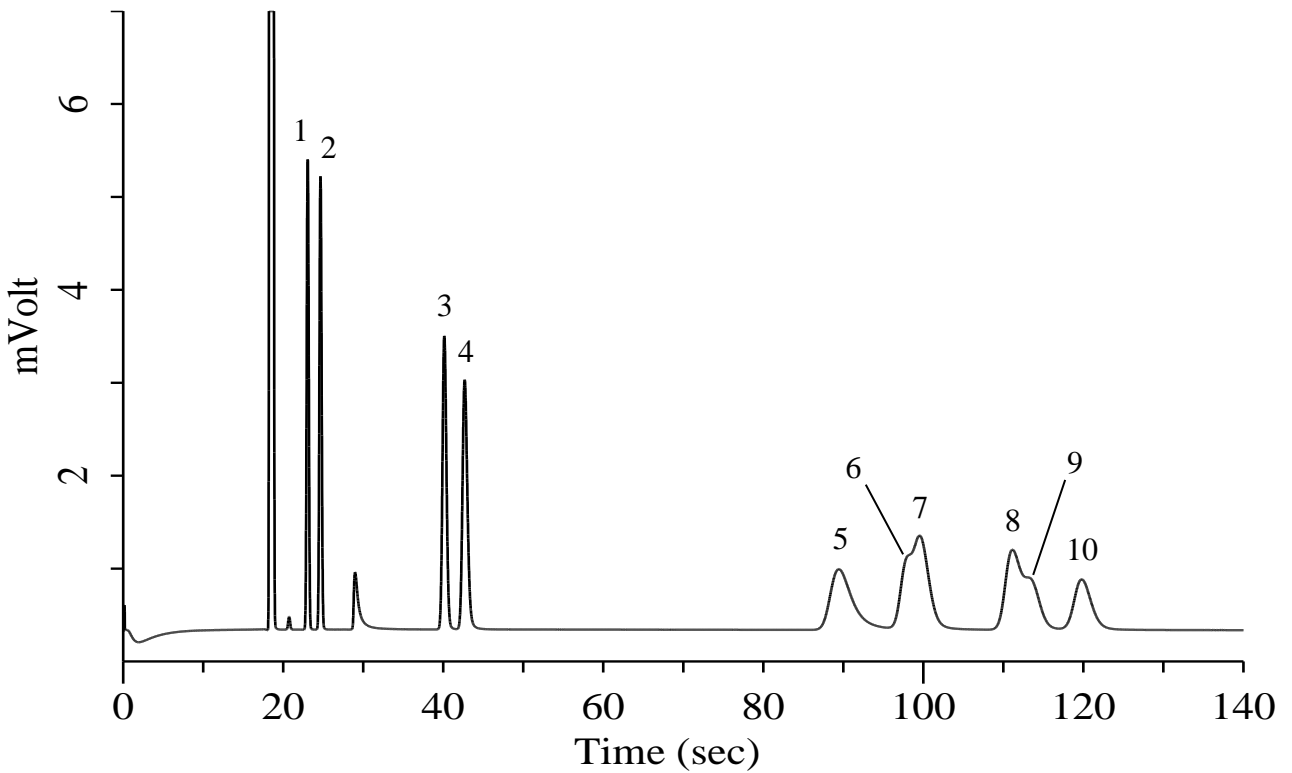


Hydrocarbons C2-C4

Specification

One GC Channel



Conditions

System : Micro GC
Column : PoraPLOT Q 10 m
Column Temp. : 100 °C
Carrier Gas : He 200 kPa
Inject Time : 40 msec

Analyte:

| | |
|--|----------------|
| 1. Ethylene (C ₂ H ₄) | 1000 ppm (v/v) |
| 2. Ethane (C ₂ H ₆) | 1000 ppm (v/v) |
| 3. Propylene (C ₃ H ₆) | 1000 ppm (v/v) |
| 4. Propane (C ₃ H ₈) | 1000 ppm (v/v) |
| 5. Isobutane (C ₄ H ₁₀) | 1000 ppm (v/v) |
| 6. Isobutene (C ₄ H ₈) | 1000 ppm (v/v) |
| 7. 1-Butene (C ₄ H ₈) | 1000 ppm (v/v) |
| 8. <i>n</i> -Butane (C ₄ H ₁₀) | 1000 ppm (v/v) |
| 9. <i>trans</i> -2-Butene (C ₄ H ₈) | 1000 ppm (v/v) |
| 10. <i>cis</i> -2-Butene (C ₄ H ₈) | 1000 ppm (v/v) |

Balance Gas He