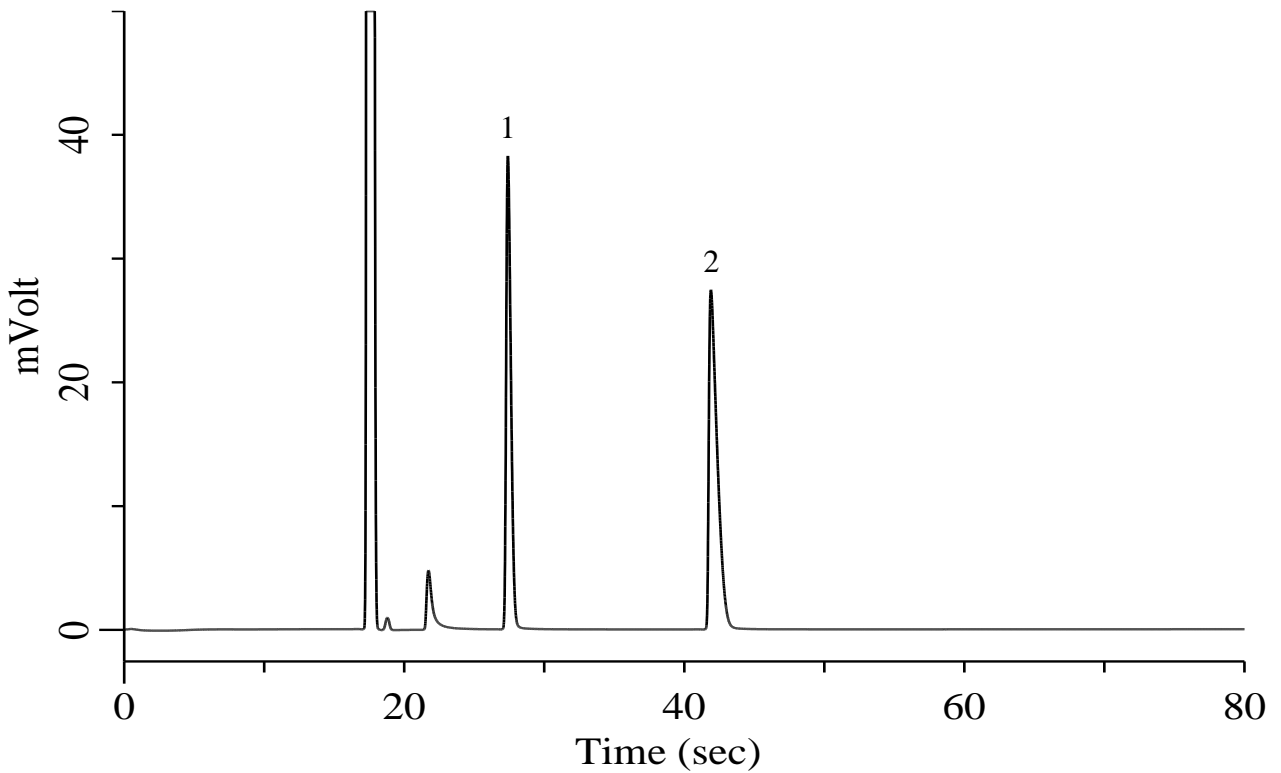


## Alcohol C1-C2

### Specification

One GC Channel



### Conditions

System : Micro GC  
 Column : PoraPLOT Q 10 m  
 Column Temp. : 150 °C  
 Carrier Gas : He 190 kPa  
 Inject Time : 40 msec

### Analyte:

1. Methanol 1 % (v/v)  
 2. Ethanol 1 % (v/v)

Balance Gas He