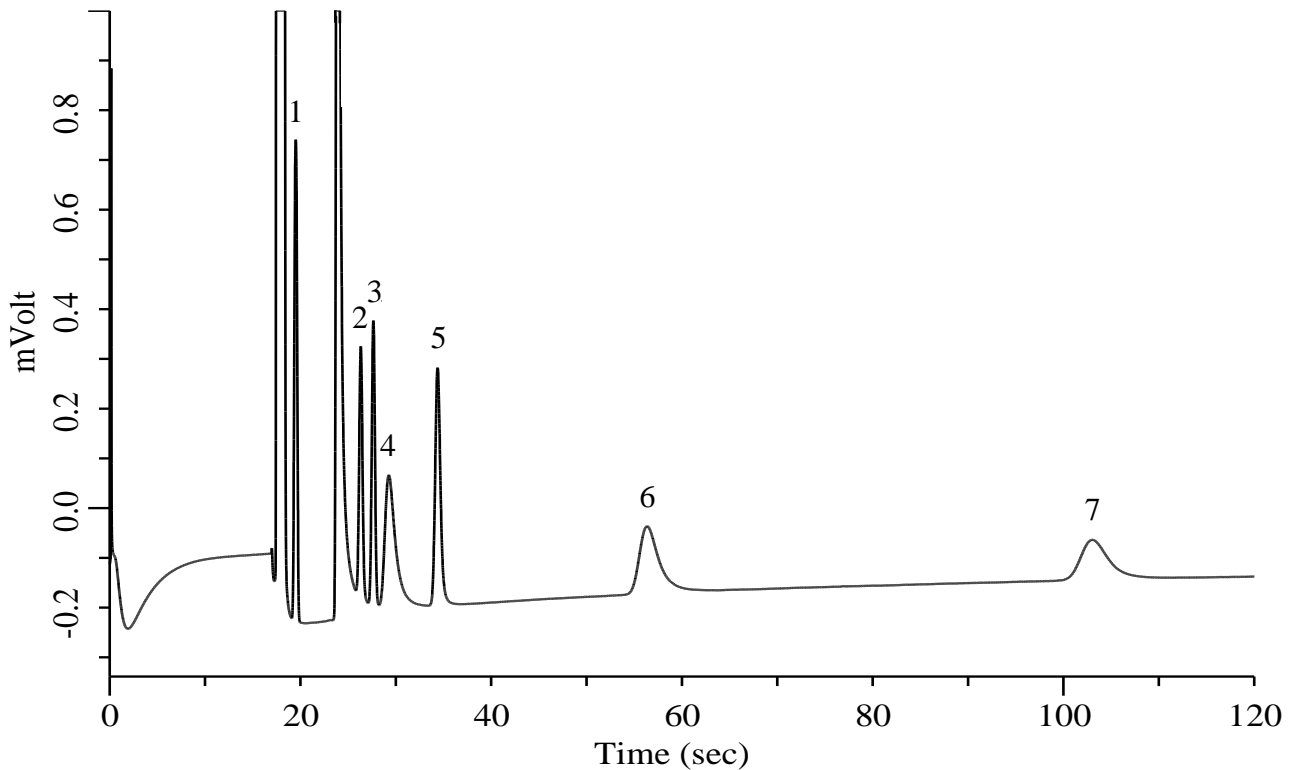


Organic fluorine compounds

Specification

One GC Channel



Conditions

System : Micro GC
Column : PoraPLOT Q 10 m
Column Temp. : 120 °C
Carrier Gas : He 200 kPa
Inject Time : 40 msec

Analyte:

1. Carbon dioxide (CO ₂)	
2. 1,1,1,2-Tetrafluoroethane (R-134a)	100 ppm (v/v)
3. 1,1-Difluoroethane (R-152a)	100 ppm (v/v)
4. Octafluorocyclobutane (R-C318)	100 ppm (v/v)
5. Dichlorodifluoromethane (R-12)	100 ppm (v/v)
6. 1,2-Dichloro-1,1,2,2-tetrafluoroethane (R-114)	100 ppm (v/v)
7. Trichlorofluoromethane (R-11)	100 ppm (v/v)

Balance Gas N₂