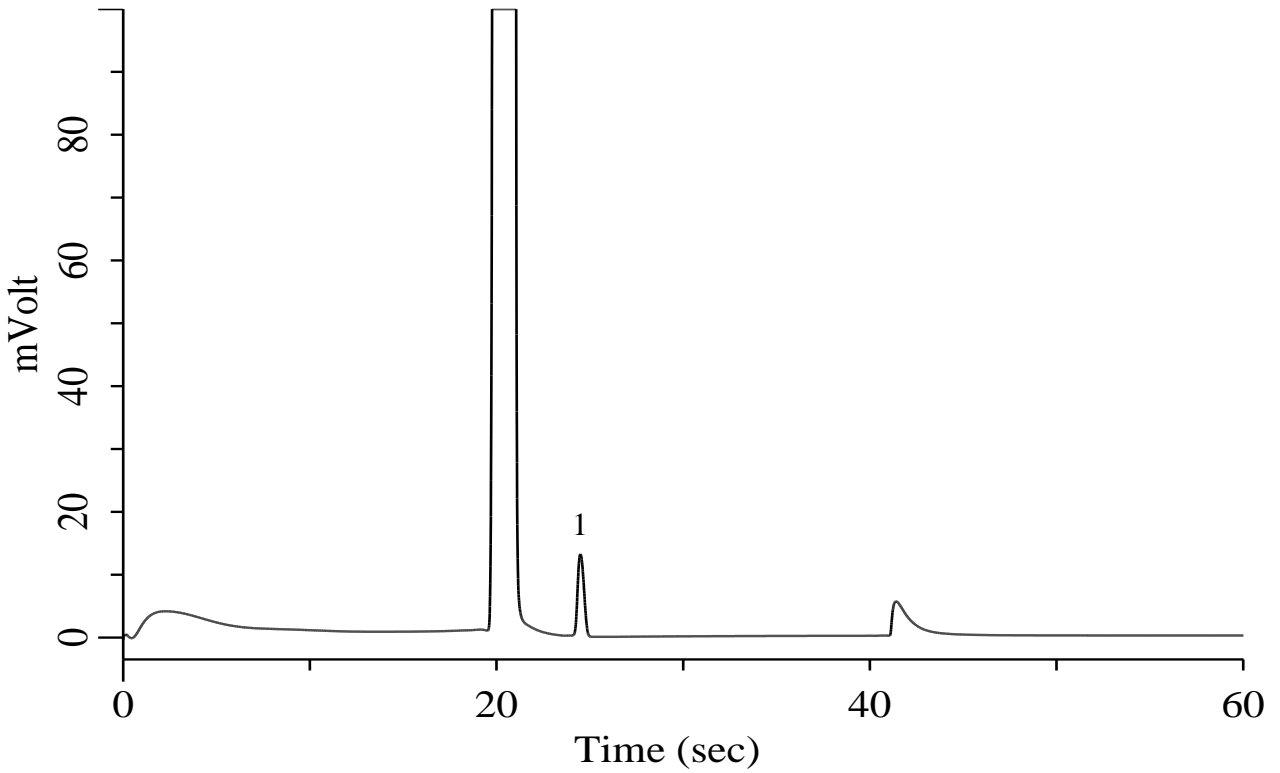


CO₂ in H₂

Specification

One GC Channel



Conditions

System : Micro GC
 Column : PoraPLOT Q 10 m
 Column Temp. : 80 °C
 Carrier Gas : Ar 190 kPa
 Inject Time : 40 msec

Analyte:

1. Carbon dioxide (CO₂) 1 % (v/v)
 Balance Gas H₂