

# InertSearch for GC

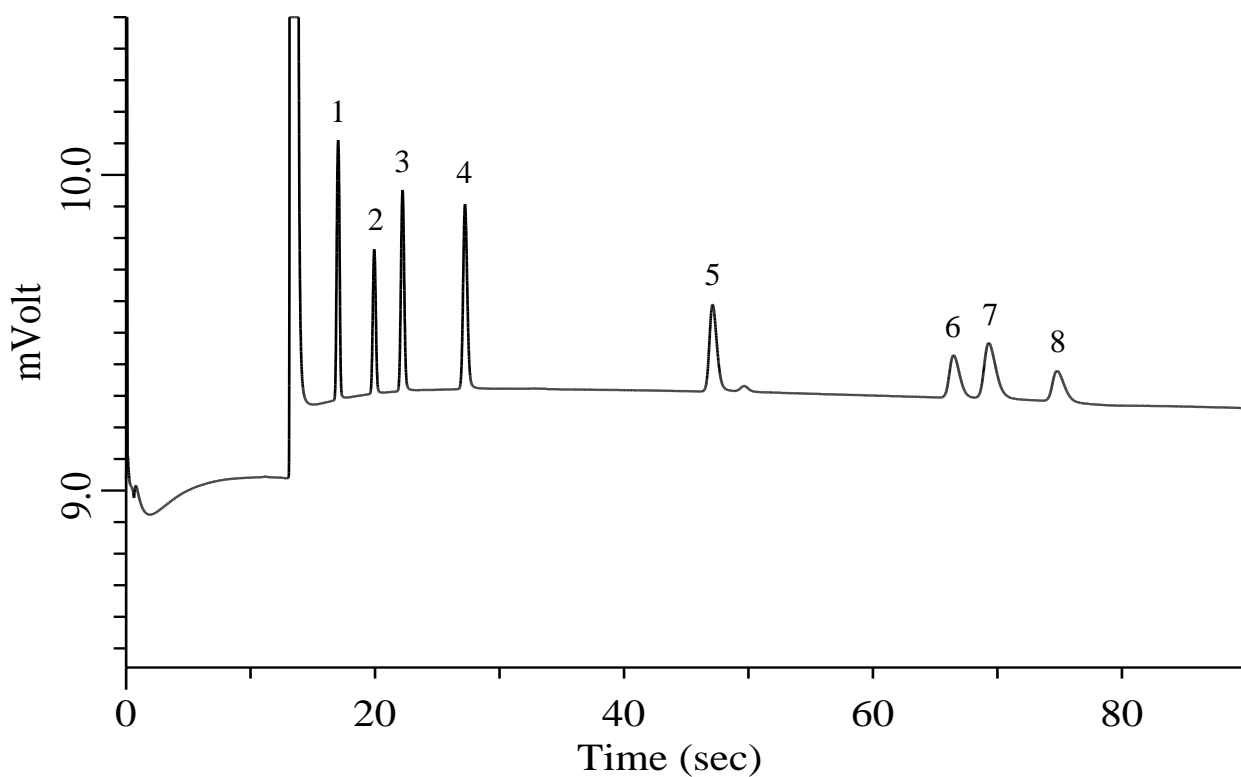
Micro GC Applications

## Organic fluorine compounds

Data No. MA021-0000

### Specification

One GC Channel



### Conditions

System : Micro GC  
Column : Al<sub>2</sub>O<sub>3</sub>/KCl PLOT 10 m  
Column Temp. : 80 °C  
Carrier Gas : He 200 kPa  
Inject Time : 40 msec

### Analyte:

1. Octafluoropropane (R-218)	100 ppm (v/v)
2. Trifluoromethane (R-23)	100 ppm (v/v)
3. Dichlorodifluoromethane (R-12)	100 ppm (v/v)
4. Octafluorocyclobutane (R-C318)	100 ppm (v/v)
5. 1,2-Dichloro-1,1,2,2-tetrafluoroethane(R-114)	100 ppm (v/v)
6. 1,1,1,2-Tetrafluoroethane (R-134a)	100 ppm (v/v)
7. Trichlorofluoromethane (R-11)	100 ppm (v/v)
8. 1,1-Difluoroethane (R-152a)	100 ppm (v/v)

Balance Gas N<sub>2</sub>