

InertSearch for GC

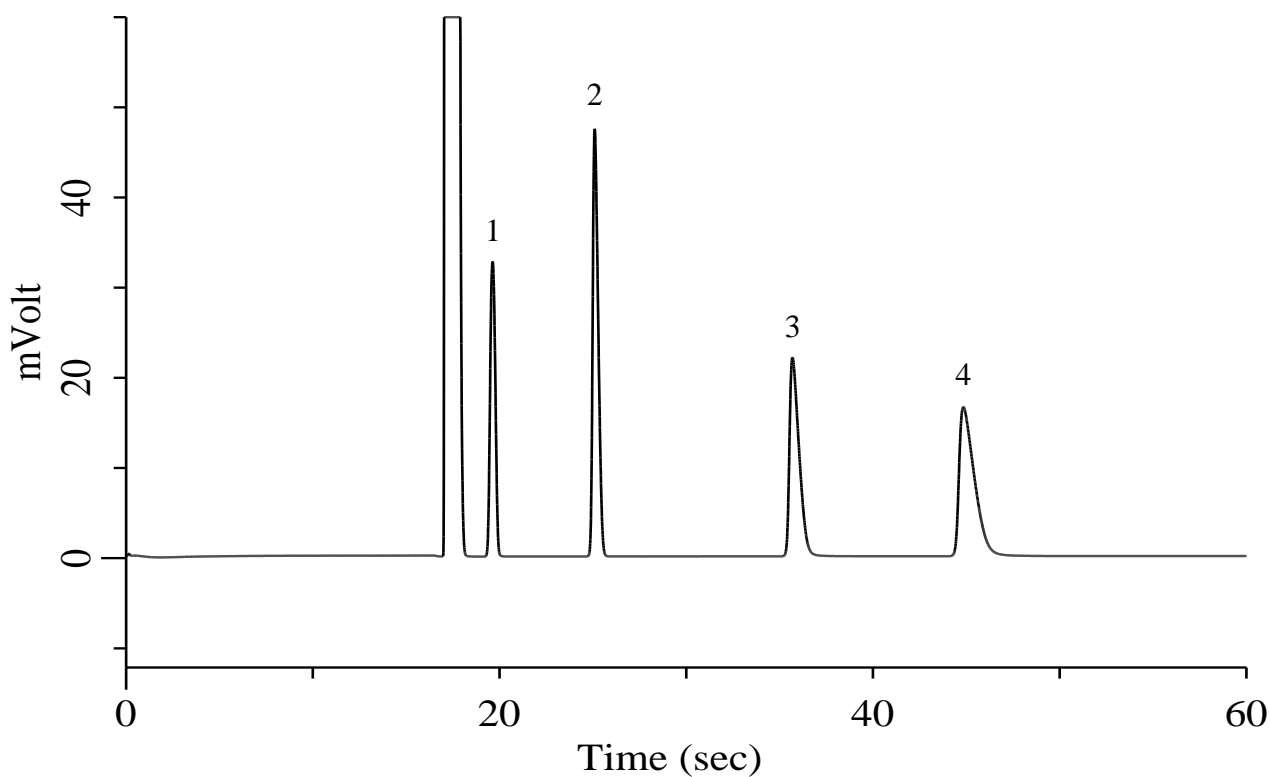
Micro GC Applications

CO₂, Hydrocarbons C1-C2 in N₂

Data No. MA022-0000

Specification

One GC Channel



Conditions

System : Micro GC
Column : PoraPLOT Q 10 m
Column Temp. : 40 °C
Carrier Gas : He 200 kPa
Inject Time : 40 msec

Analyte:

1. Methane (CH₄) 1 % (v/v)
2. Carbon dioxide (CO₂) 1 % (v/v)
3. Ethylene (C₂H₄) 1 % (v/v)
4. Ethane (C₂H₆) 1 % (v/v)

Balance Gas N₂