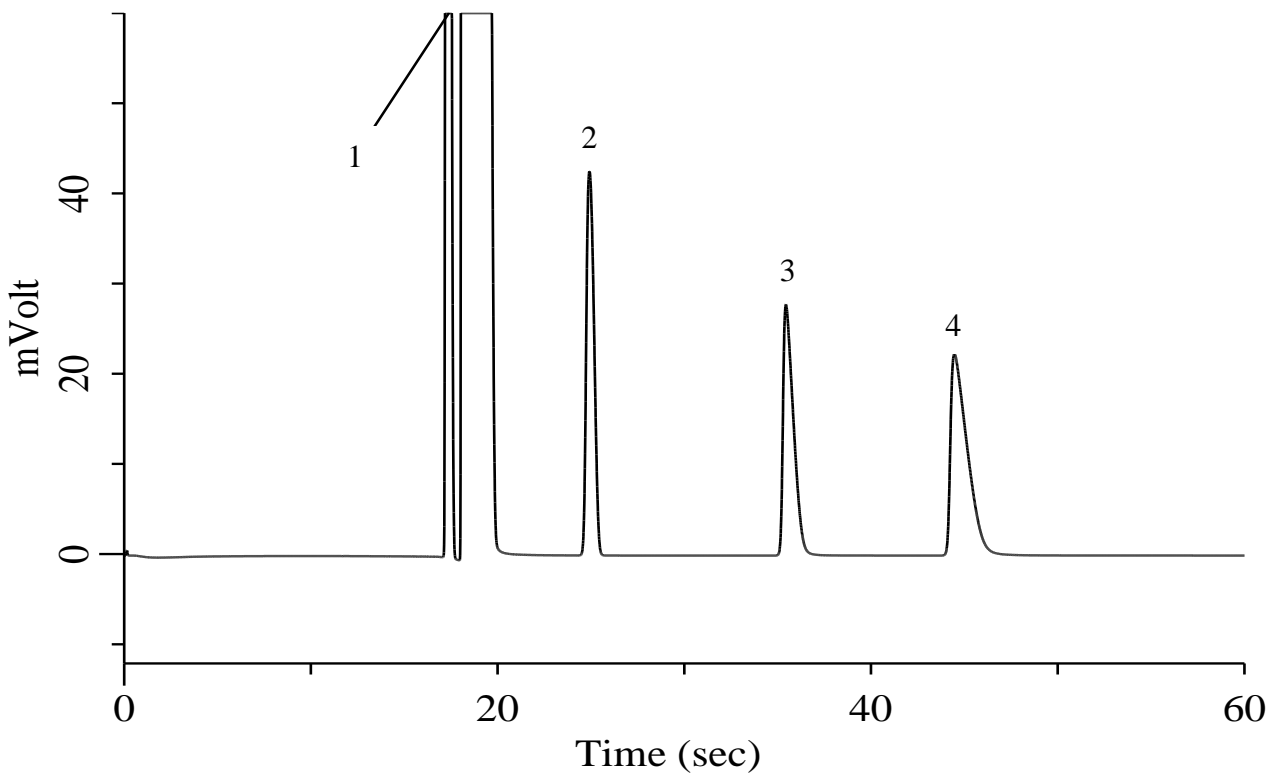


N₂, CO₂, Hydrocarbons C1-C2 in Methane

Specification
One GC Channel



Conditions

System : Micro GC
 Column : PoraPLOT Q 10 m
 Column Temp. : 40 °C
 Carrier Gas : He 200 kPa
 Inject Time : 40 msec

Analyte:

1. Nitrogen (N₂) 1 % (v/v)
 2. Carbon dioxide (CO₂) 1 % (v/v)
 3. Ethylene (C₂H₄) 1 % (v/v)
 4. Ethane(C₂H₆) 1 % (v/v)

Balance Gas CH₄