

InertSearch for GC

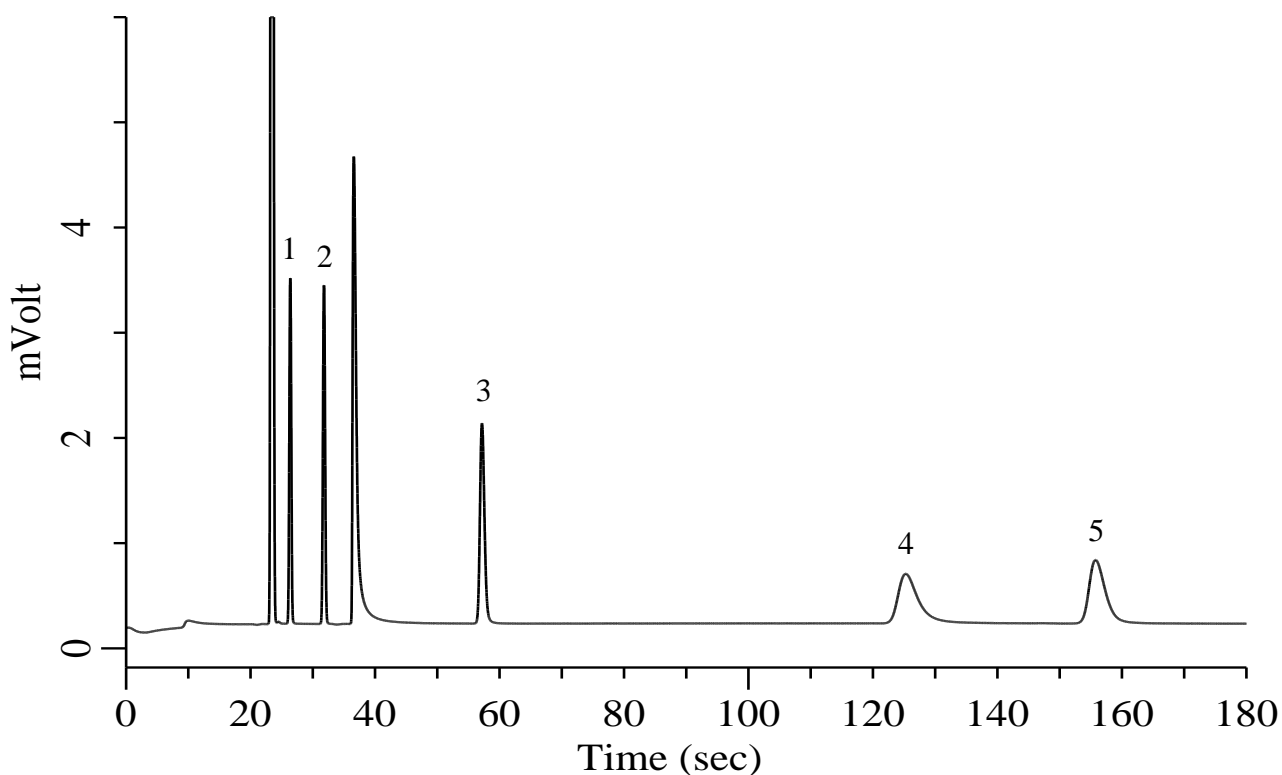
Micro GC Applications

CO₂, Hydrocarbons C₂-C₄ in He

Data No. MA027-0591

Specification

One GC Channel



Conditions

System : Micro GC
Column : PoraPLOT Q 10 m
Column Temp. : 100 °C
Carrier Gas : He 190 kPa
Inject Time : 40 msec

Analyte:

1. Carbon dioxide (CO ₂)	1000 ppm (v/v)
2. Ethane (C ₂ H ₆)	1000 ppm (v/v)
3. Propane (C ₃ H ₈)	1000 ppm (v/v)
4. Isobutane (C ₄ H ₁₀)	1000 ppm (v/v)
5. <i>n</i> -Butane (C ₄ H ₁₀)	1000 ppm (v/v)

Balance Gas He