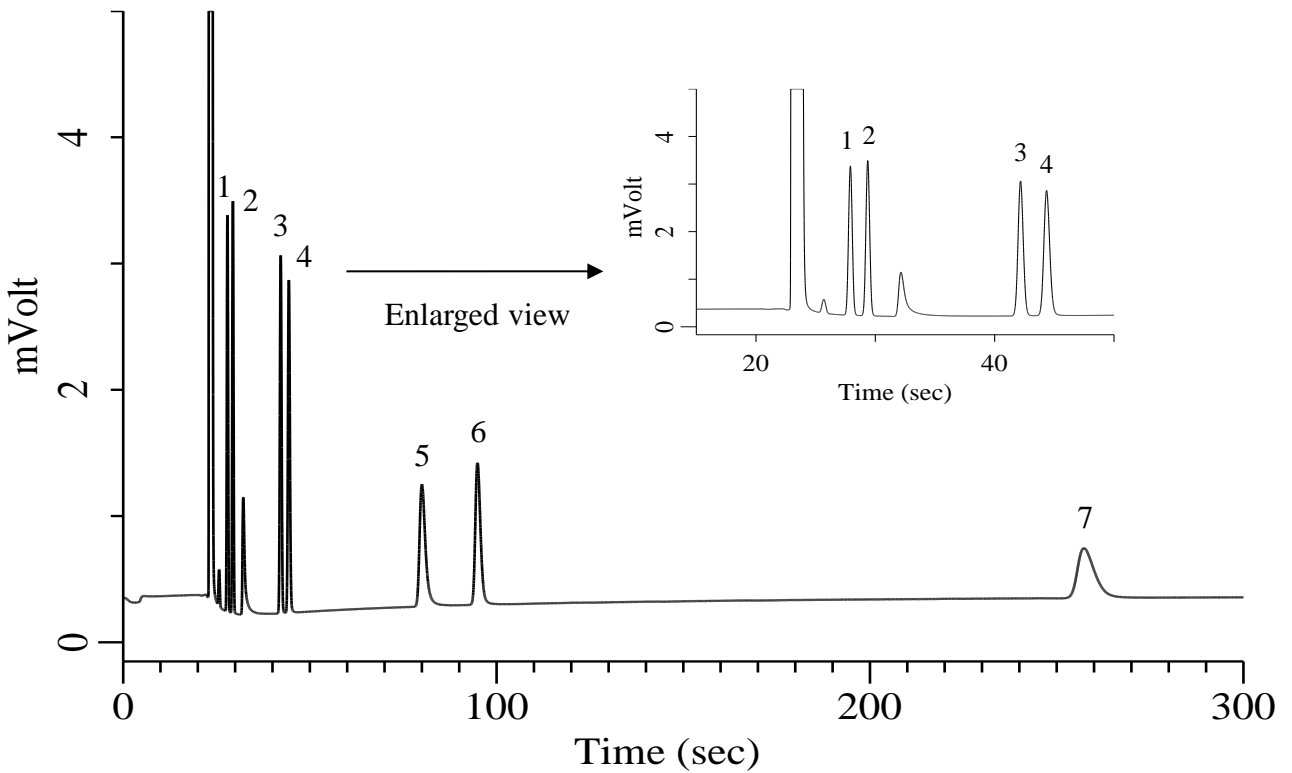


Hydrocarbons C2-C5 in N₂

Specification
One GC Channel



Conditions

System : Micro GC
 Column : PoraPLOT Q 10 m
 Column Temp. : 120 °C
 Carrier Gas : He 190 kPa
 Inject Time : 40 msec

Analyte:

1. Ethylene (C ₂ H ₄)	1000 ppm (v/v)
2. Ethane (C ₂ H ₆)	1000 ppm (v/v)
3. Propylene (C ₃ H ₆)	1000 ppm (v/v)
4. Propane (C ₃ H ₈)	1000 ppm (v/v)
5. Isobutane (C ₄ H ₁₀)	1000 ppm (v/v)
6. <i>n</i> -Butane (C ₄ H ₁₀)	1000 ppm (v/v)
7. <i>n</i> -Pentane (C ₅ H ₁₂)	1000 ppm (v/v)

Balance Gas N₂