

InertSearch for GC

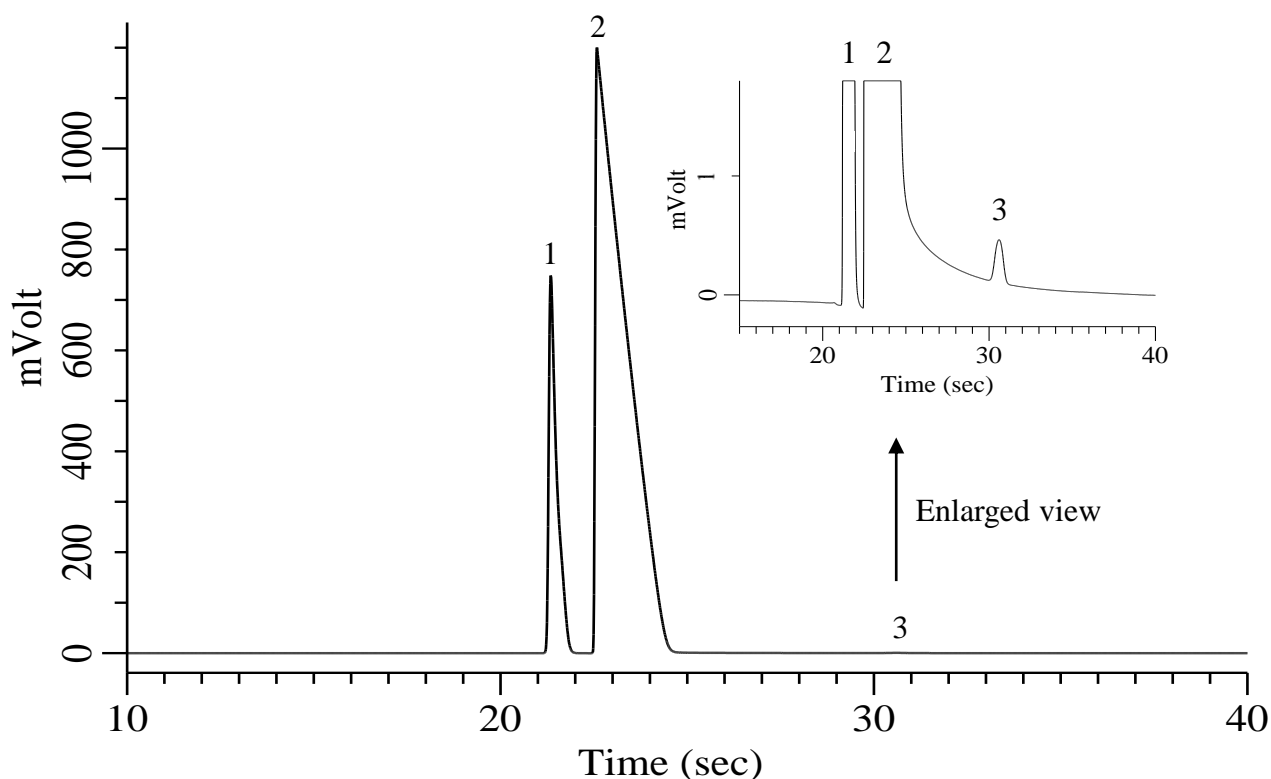
Micro GC Applications

Air in high concentration Methane

Data No. MA029-0591

Specification

One GC Channel



Conditions

System : Micro GC
Column : PoraPLOT Q 10 m
Column Temp. : 40 °C
Carrier Gas : Ar 190 kPa
Inject Time : 40 msec

Analyte:

1. Oxygen (O₂) + Nitrogen (N₂) ----
2. Methane (CH₄) 90 % (v/v)
3. Carbon dioxide (CO₂) ----
90 % CH₄ + 10 % Air