

# InertSearch for GC

Micro GC Applications

## Inorganic gases (H<sub>2</sub>, O<sub>2</sub>, N<sub>2</sub>, Methane, CO)

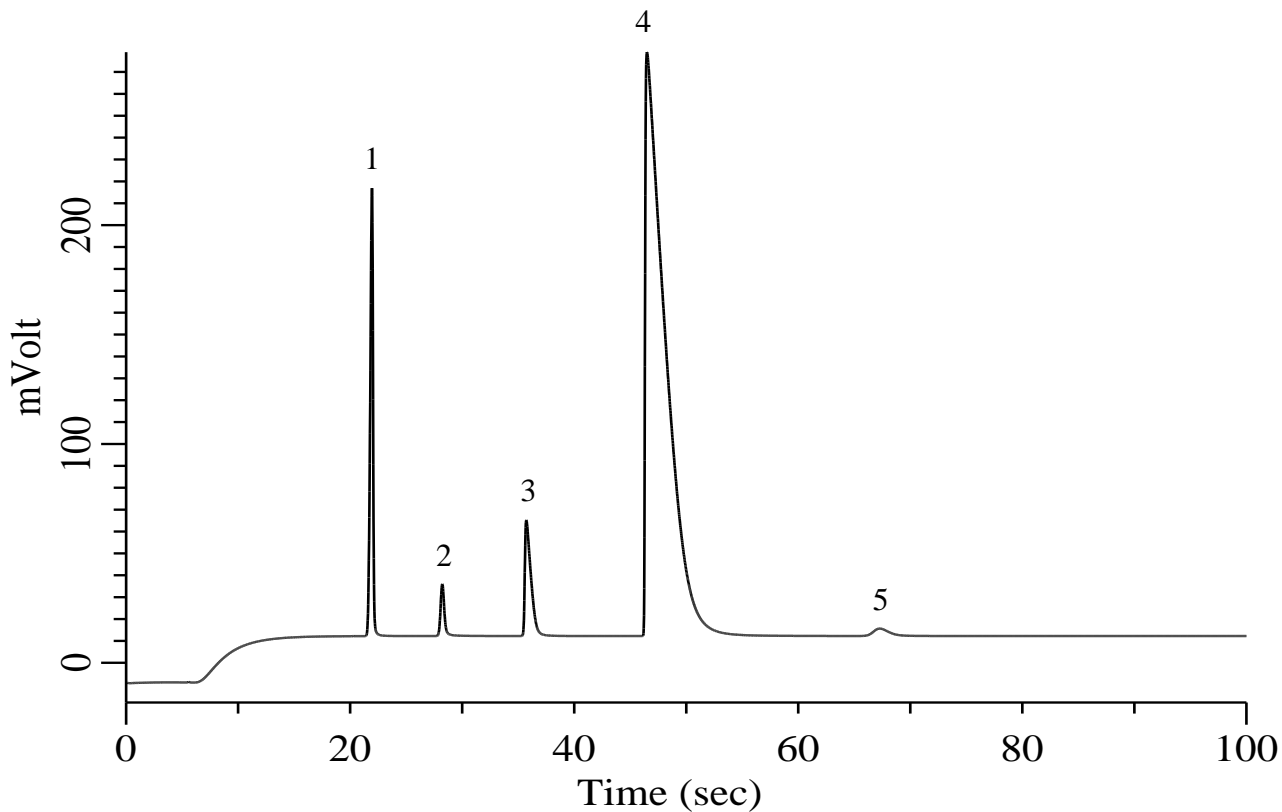
Data No. MA030-0000

### Specification

One GC Channel

#### ► Option

Backflush (BF)



### Conditions

**System** : Micro GC  
**Column** : Molsieve 5A 10 m + BF 1 m  
**BF Time** : 5.5 sec  
**Column Temp.** : 100 °C  
**Carrier Gas** : Ar 170 kPa  
**Inject Time** : 40 msec

### Analyte:

1. Hydrogen (H <sub>2</sub> )	2.5 % (v/v)
2. Oxygen (O <sub>2</sub> )	2.5 % (v/v)
3. Nitrogen (N <sub>2</sub> )	90 % (v/v)
4. Methane (CH <sub>4</sub> )	2.5 % (v/v)
5. Carbon monoxide (CO)	2.5 % (v/v)