

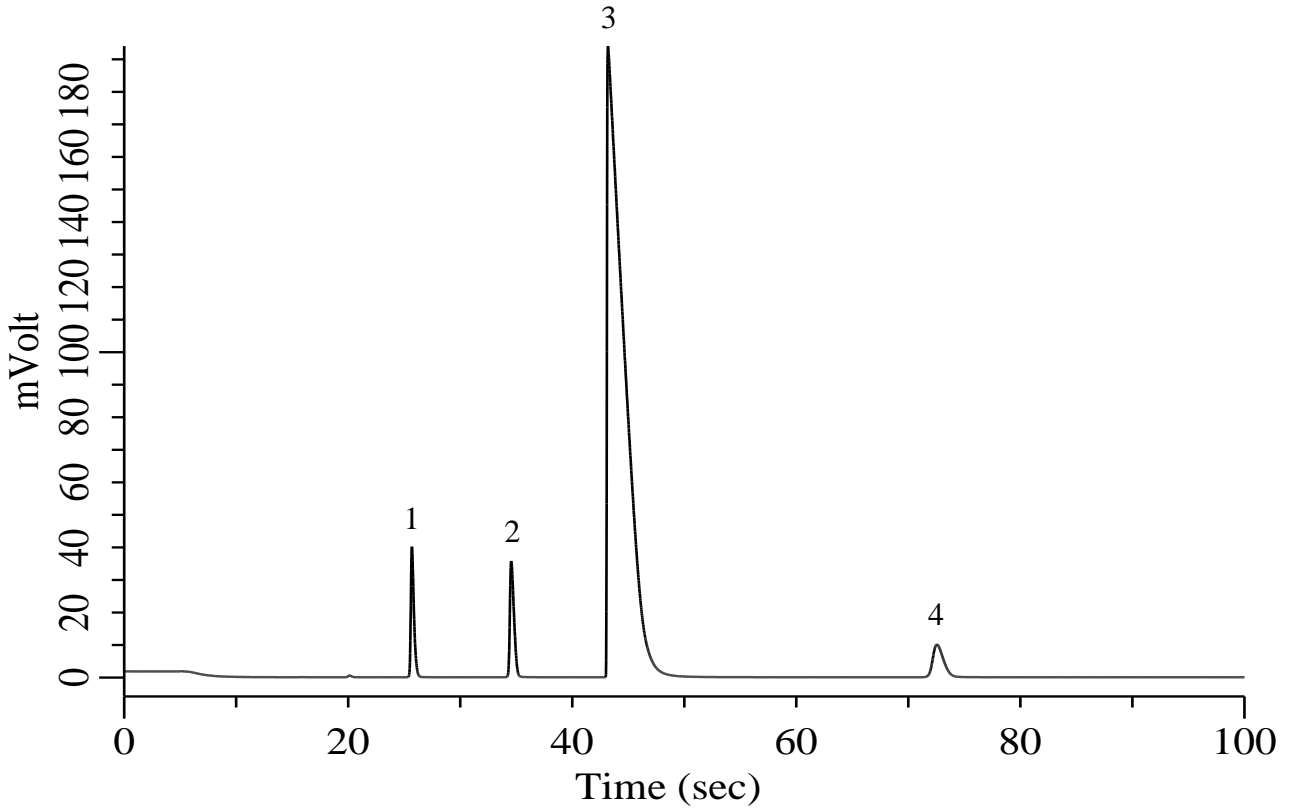
Inorganic gases (O₂, N₂, Methane, CO)

Specification

One GC Channel

► Option

Backflush (BF)



Conditions

System : Micro GC
Column : Molsieve 5A 10 m + BF 1 m
BF Time : 5.0 sec
Column Temp. : 100 °C
Carrier Gas : He 170 kPa
Inject Time : 40 msec

Analyte:

1. Oxygen (O₂) 2.5 % (v/v)
 2. Nitrogen (N₂) 2.5 % (v/v)
 3. Methane (CH₄) 90 % (v/v)
 4. Carbon monoxide (CO) 2.5 % (v/v)