

Hydrocarbons C2-C7, Methanol, DME

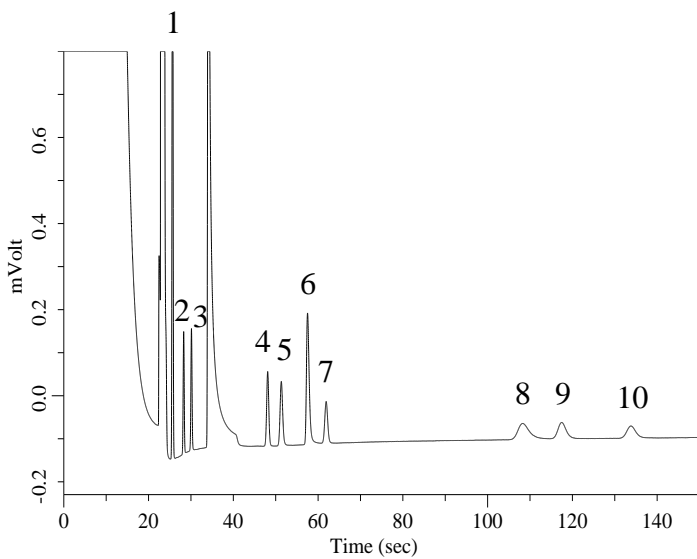
Specification

Two GC Channels

► Option

Backflush (BF)

Channel 1. PoraPLOT Q



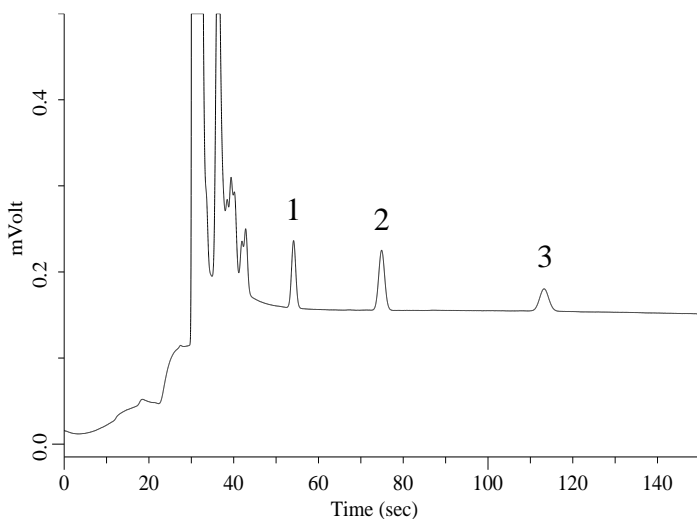
Conditions

System	: Micro GC
Column	: PoraPLOT Q 10 m + BF 1 m
BF Time	: 13 sec
Column Temp.	: 100 °C
Carrier Gas	: He 190 kPa
Inject Time	: 40 msec

Analyte:

1. Carbon dioxide (CO ₂)	6. Methanol
2. Ethylene (C ₂ H ₄)	7. Dimethyl ether
3. Ethane (C ₂ H ₆)	8. Isobutane (C ₄ H ₁₀)
4. Propylene (C ₃ H ₆)	9. 1-Butene (C ₄ H ₈)
5. Propane (C ₃ H ₈)	10. <i>n</i> -Butane (C ₄ H ₁₀)

Channel 2. CP-Sil 5CB



Conditions

System	: Micro GC
Column	: CP-Sil 5CB 8 m
Column Temp.	: 50 °C
Carrier Gas	: He 130 kPa
Inject Time	: 40 msec

Analyte:

1. <i>n</i> -Pentane (C ₅ H ₁₂)
2. <i>n</i> -Hexane (C ₆ H ₁₄)
3. <i>n</i> -Heptane (C ₇ H ₁₆)