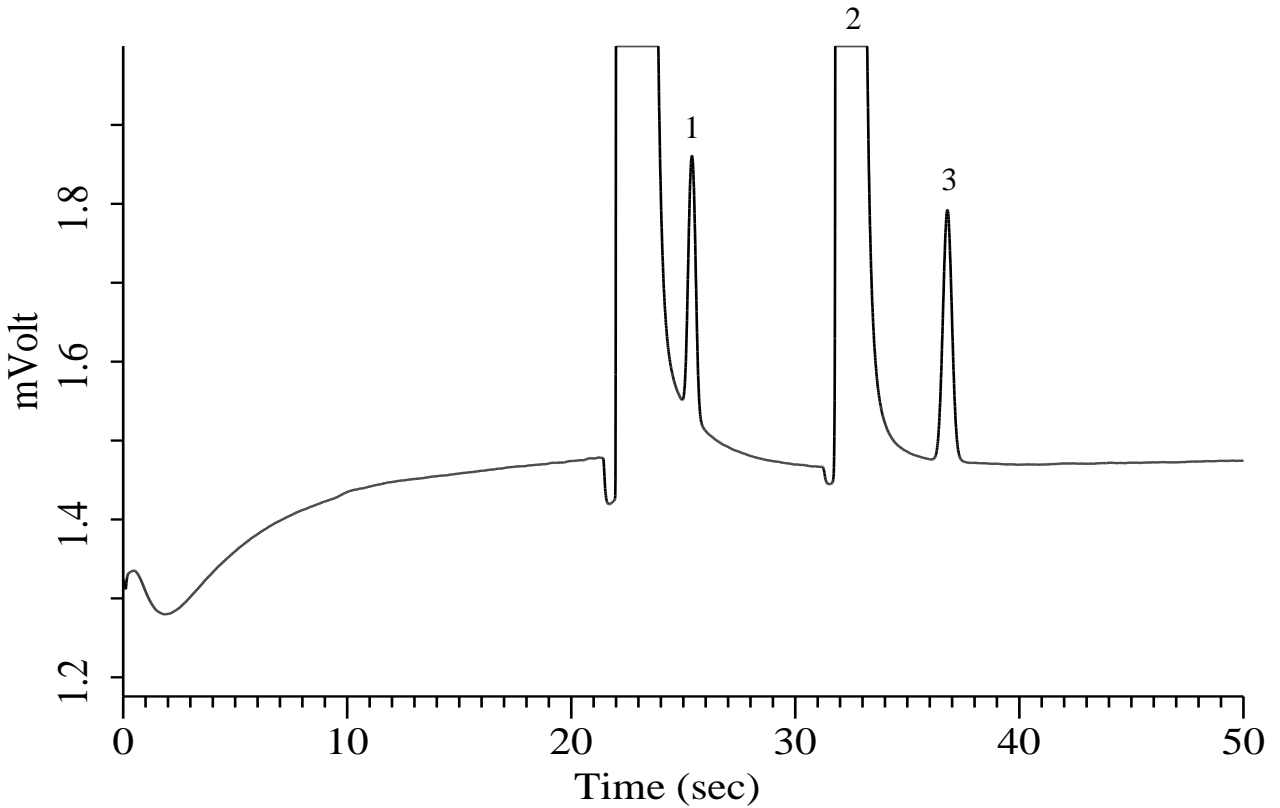


Nitrous oxide

Specification

One GC Channel



Conditions

System : Micro GC
 Column : PoraPLOT Q 10 m
 Column Temp. : 40 °C
 Carrier Gas : He 190 kPa
 Inject Time : 40 msec

Analyte:

1. Methane (CH₄) 500 ppm (v/v)
 2. Carbon dioxide (CO₂) 5 % (v/v)
 3. Nitrous oxide (N₂O) 100 ppm (v/v)

Balance Gas N₂