

InertSearch for GC

Micro GC Applications

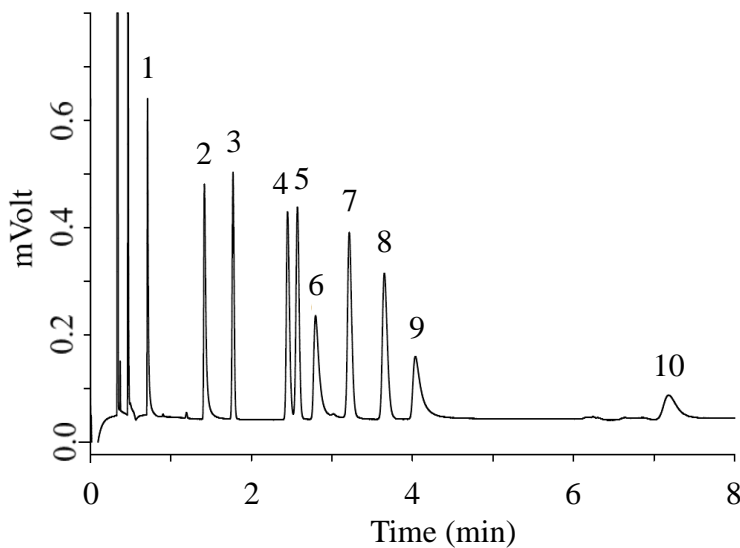
Organic Solvents

Data No. MA039-0000

Specification

Two GC Channels

Channel 1. PoraPLOT Q



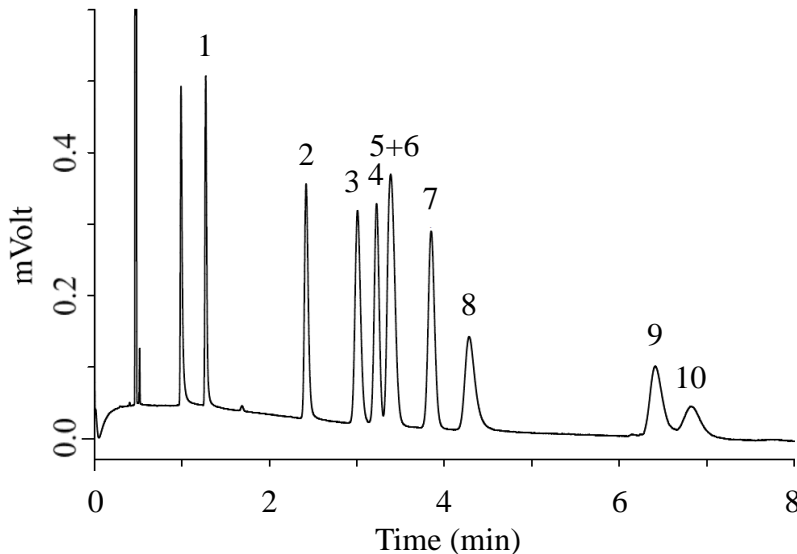
Conditions

System : Micro GC
Column : PoraPLOT Q 10 m
Column Temp. : 120 °C
Carrier Gas : He 190 kPa
Inject Time : 40 msec

Analyte:

1. Methanol	500 ppm (v/v)
2. Ethanol	500 ppm (v/v)
3. Acetonitrile	500 ppm (v/v)
4. Acetone	500 ppm (v/v)
5. Dichloromethane	500 ppm (v/v)
6. 2-Propanol	500 ppm (v/v)
7. Methyl acetate	500 ppm (v/v)
8. Ethyl ether	500 ppm (v/v)
9. 1-Propanol	500 ppm (v/v)
10. Tetrahydrofuran	500 ppm (v/v)

Channel 2. PoraPLOT U



Conditions

System : Micro GC
Column : PoraPLOT U 10 m
Column Temp. : 120 °C
Carrier Gas : He 190 kPa
Inject Time : 40 msec

Analyte:

1. Methanol	500 ppm (v/v)
2. Ethanol	500 ppm (v/v)
3. Ethyl ether	500 ppm (v/v)
4. Dichloromethane	500 ppm (v/v)
5. Acetonitrile	500 ppm (v/v)
6. Acetone	500 ppm (v/v)
7. Methyl acetate	500 ppm (v/v)
8. 2-Propanol	500 ppm (v/v)
9. Tetrahydrofuran	500 ppm (v/v)
10. 1-Propanol	500 ppm (v/v)