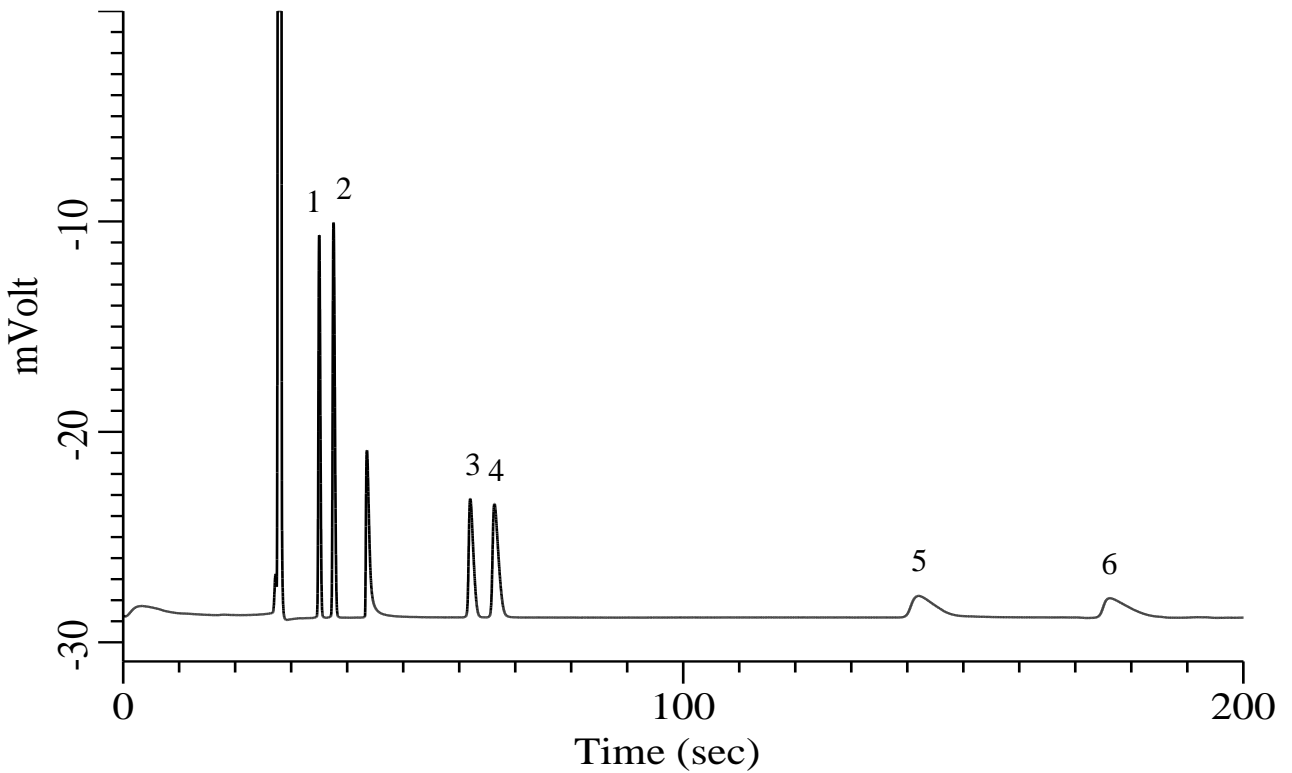


Hydrocarbons C2-C4

Specification

One GC Channel



Conditions

System : Micro GC
 Column : PoraPLOT Q 10 m
 Column Temp. : 100 °C
 Carrier Gas : Ar 190 kPa
 Inject Time : 40 msec

Analyte:

1. Ethylene (C ₂ H ₄)	1000 ppm (v/v)
2. Ethane (C ₂ H ₆)	1000 ppm (v/v)
3. Propylene (C ₃ H ₆)	1000 ppm (v/v)
4. Propane (C ₃ H ₈)	1000 ppm (v/v)
5. Isobutane (C ₄ H ₁₀)	1000 ppm (v/v)
6. <i>n</i> -Butane (C ₄ H ₁₀)	1000 ppm (v/v)

Balance Gas N₂