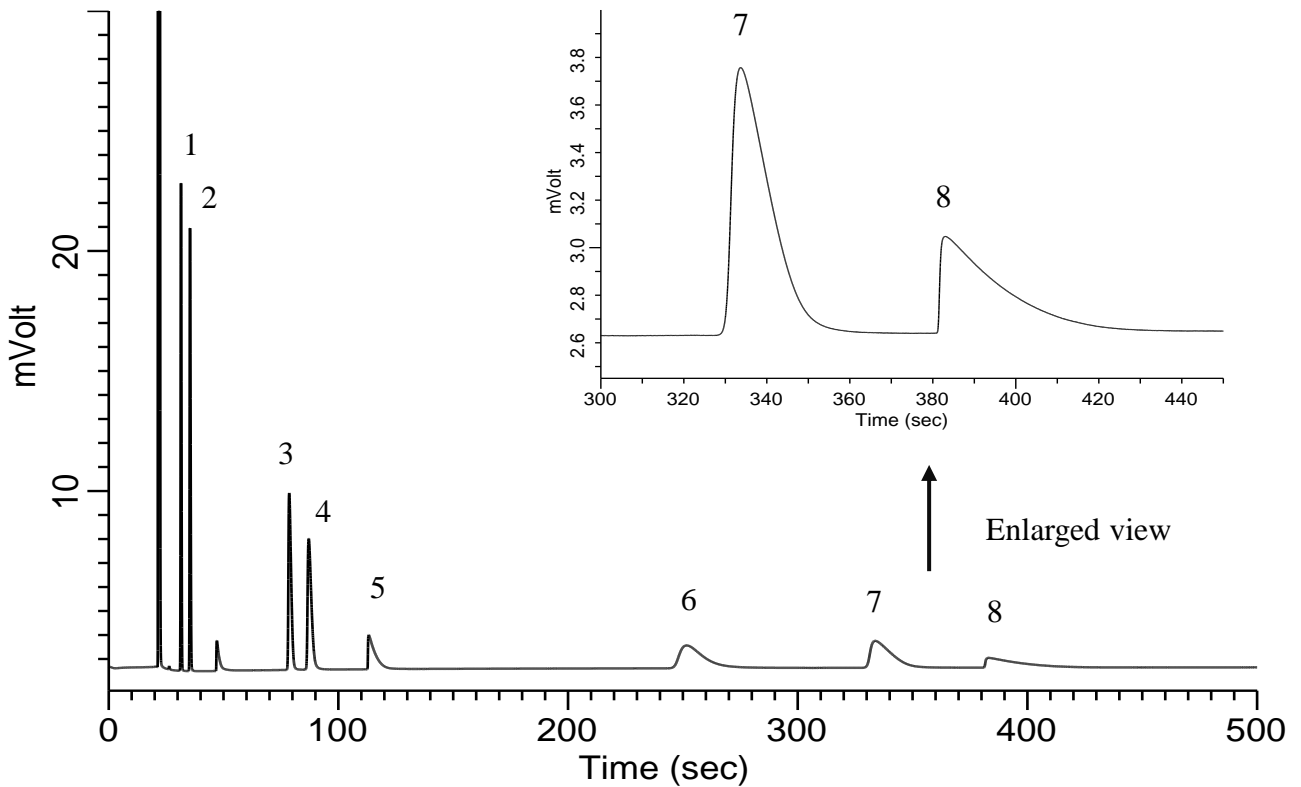


Hydrocarbons C2-C4 and Alcohol C1-C2

Specification
One GC Channel



Conditions

System : Micro GC
 Column : PoraPLOT Q 10 m
 Column Temp. : 75 °C
 Carrier Gas : He 190 kPa
 Inject Time : 40 msec

Analyte:

1. Ethylene (C ₂ H ₄)	0.5 % (v/v)
2. Ethane (C ₂ H ₆)	0.5 % (v/v)
3. Propylene (C ₃ H ₆)	0.5 % (v/v)
4. Propane (C ₃ H ₈)	0.5 % (v/v)
5. Methanol	0.5 % (v/v)
6. Isobutane (<i>i</i> -C ₄ H ₁₀)	0.5 % (v/v)
7. <i>n</i> -Butane (<i>n</i> -C ₄ H ₁₀)	0.5 % (v/v)
8. Ethanol	0.5 % (v/v)

Balance Gas He