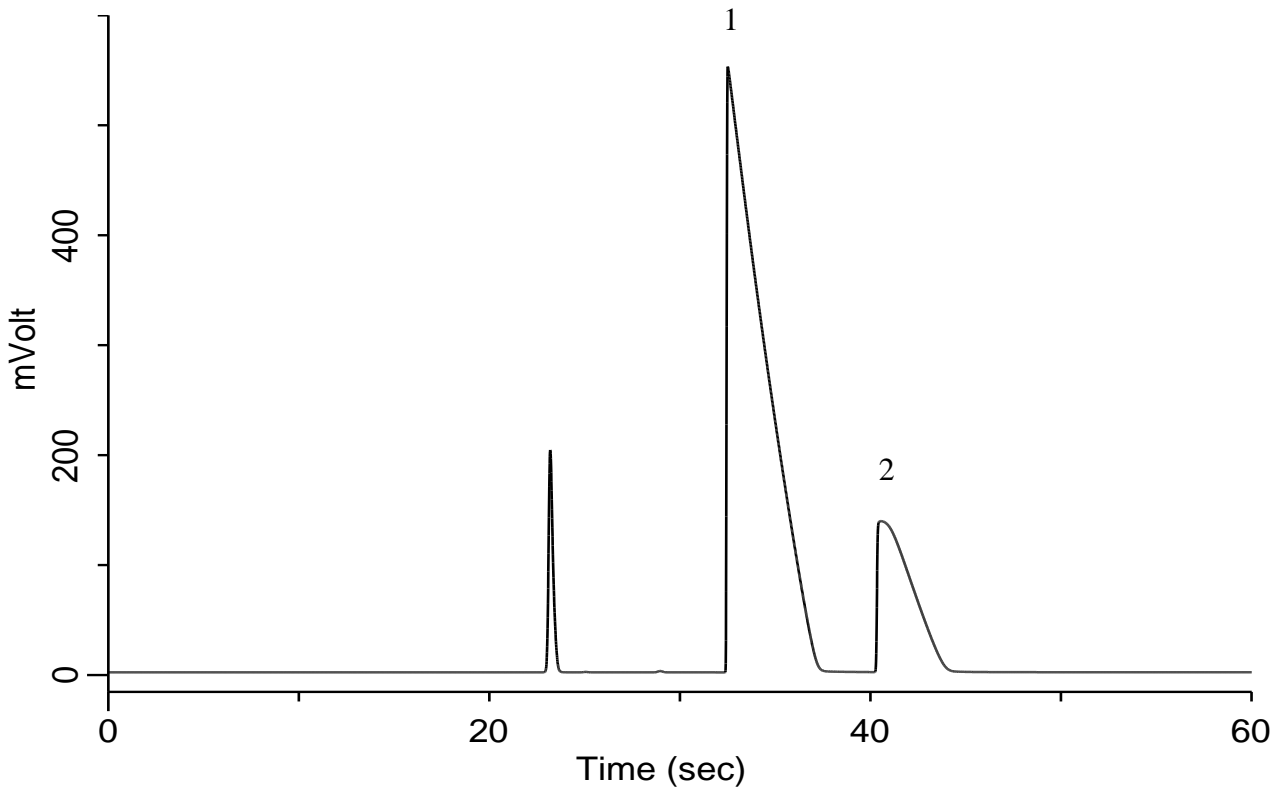


## Ethane in high concentration Ethylene

### Specification

One GC Channel



### Conditions

System : Micro GC  
 Column : PoraPLOT Q 10 m  
 Column Temp. : 60 °C  
 Carrier Gas : He 190 kPa  
 Inject Time : 40 msec

### Analyte:

1. Ethylene (C<sub>2</sub>H<sub>4</sub>) 80 % (v/v)  
 2. Ethane (C<sub>2</sub>H<sub>6</sub>) 20 % (v/v)