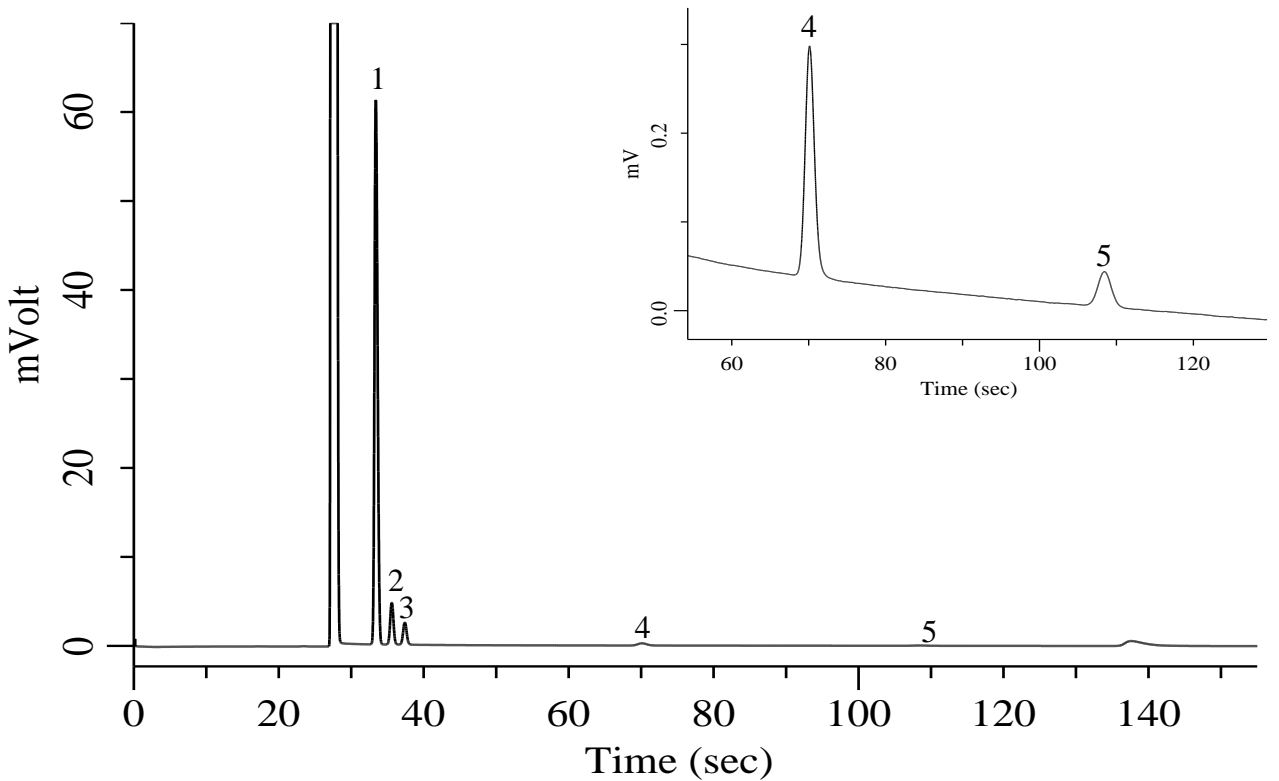


## Hydrocarbons C2-C3, CO2

**Specification**  
One GC Channel



**Conditions**

System : Micro GC  
 Column : PoraPLOT U 10 m  
 Column Temp. : 80 °C  
 Carrier Gas : He 190 kPa  
 Inject Time : 40 msec

**Analyte:**

1. Carbon dioxide (CO<sub>2</sub>) 1.8 % (v/v)  
 2. Ethylene (C<sub>2</sub>H<sub>4</sub>) 1600 ppm (v/v)  
 3. Ethane (C<sub>2</sub>H<sub>6</sub>) 730 ppm (v/v)  
 4. Propylene (C<sub>3</sub>H<sub>6</sub>) 190 ppm (v/v)  
 5. Propyne (C<sub>3</sub>H<sub>4</sub>) 100 ppm (v/v)

Balance Gas N<sub>2</sub>