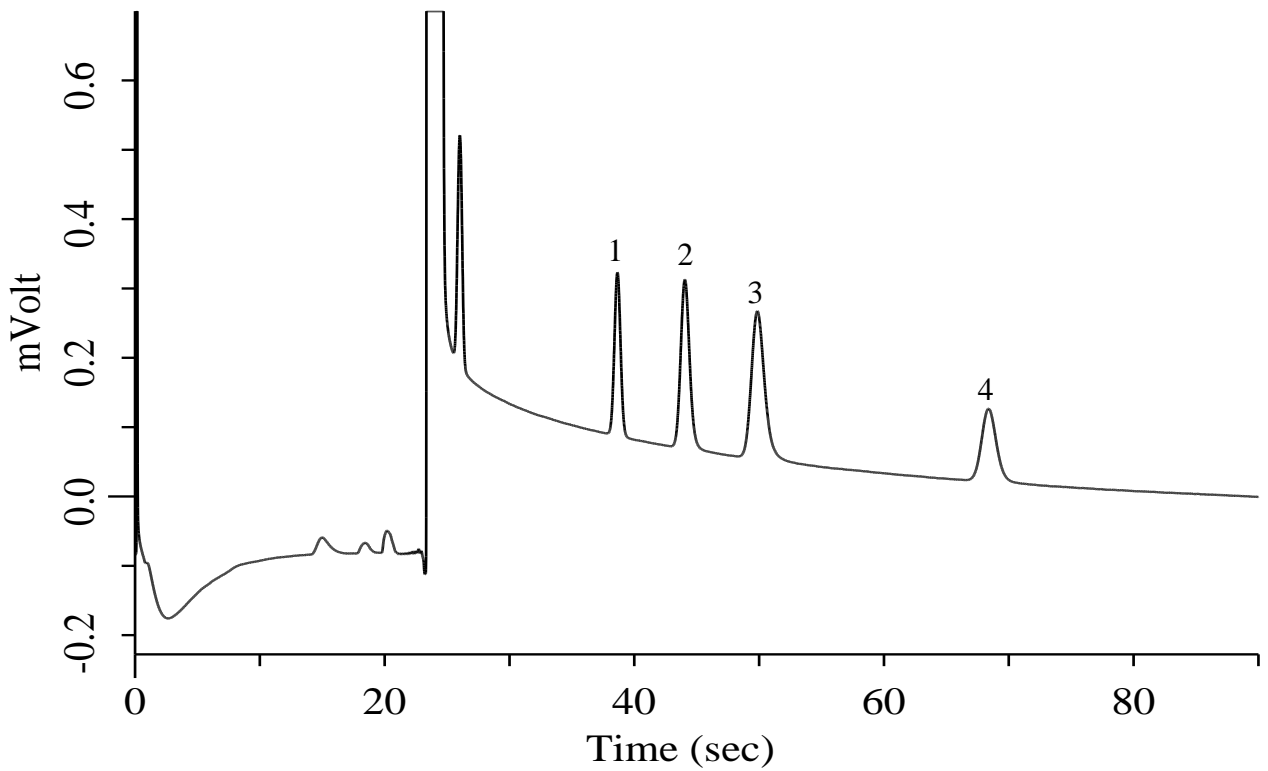


## Hydrocarbons C1-C2

### Specification

One GC Channel



### Conditions

System : Micro GC  
 Column : PoraPLOT U 10 m  
 Column Temp. : 40 °C  
 Carrier Gas : He 200 kPa  
 Inject Time : 40 msec

### Analyte:

1. Methane (CH <sub>4</sub> )	100 ppm (v/v)
2. Ethylene (C <sub>2</sub> H <sub>4</sub> )	100 ppm (v/v)
3. Ethane (C <sub>2</sub> H <sub>6</sub> )	100 ppm (v/v)
4. Acetylene (C <sub>2</sub> H <sub>2</sub> )	100 ppm (v/v)

Balance Gas N<sub>2</sub>