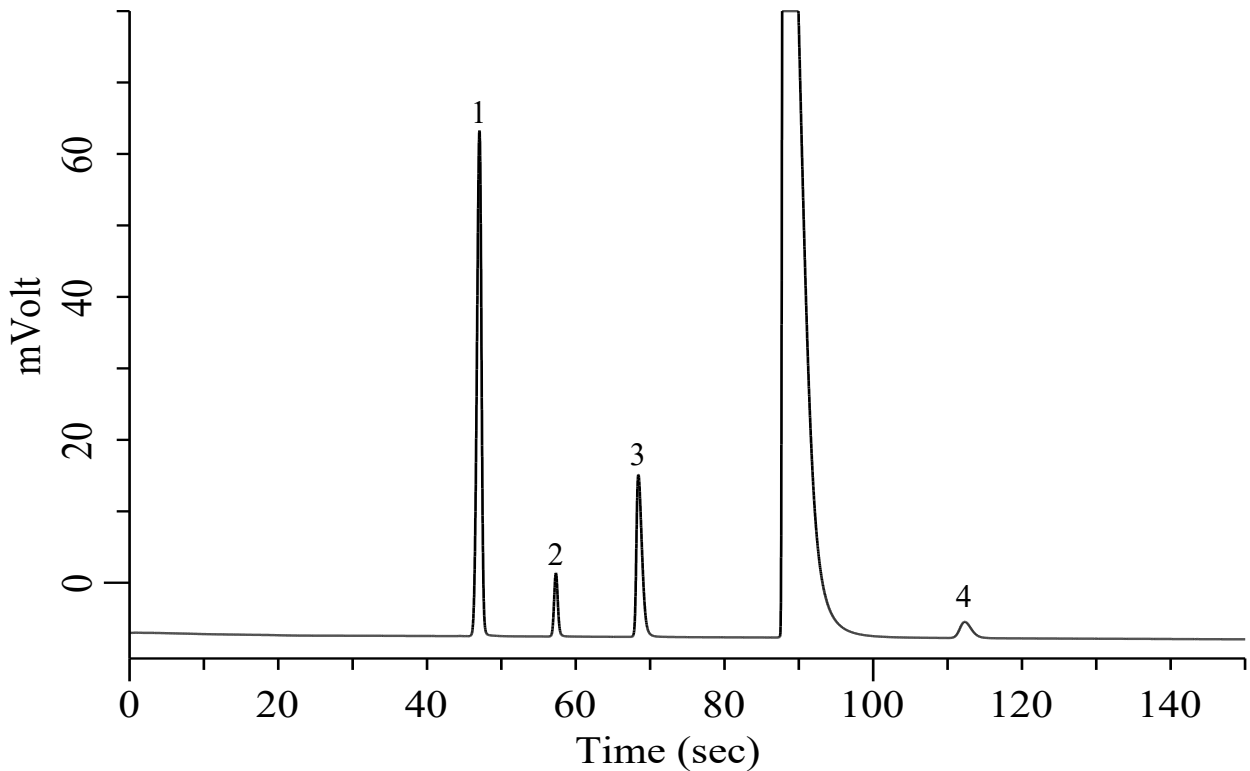


Analysis of Inorganic gases (H₂, O₂, N₂, CO)

Specification
One GC Channel



Conditions

System : Micro GC
 Column : Molsieve 5A 10 m
 Column Temp. : 100 °C
 Carrier Gas : Ar 170 kPa
 Inject Time : 40 msec

Analyte:

1. Hydrogen (H₂) 2.5 % (v/v)
 2. Oxygen (O₂) 2.5 % (v/v)
 3. Nitrogen (N₂) 2.5 % (v/v)
 4. Carbon monoxide (CO) 2.5 % (v/v)

Balance Gas CH₄