

Analysis of Inorganic gases and Hydrocarbons

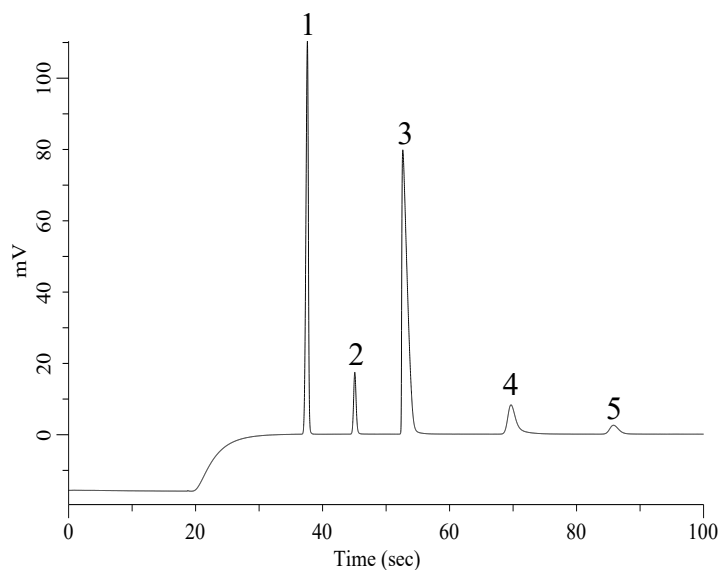
Specification

Two GC Channels

► Option

Backflush (BF)

Channel 1. Molsieve 5A



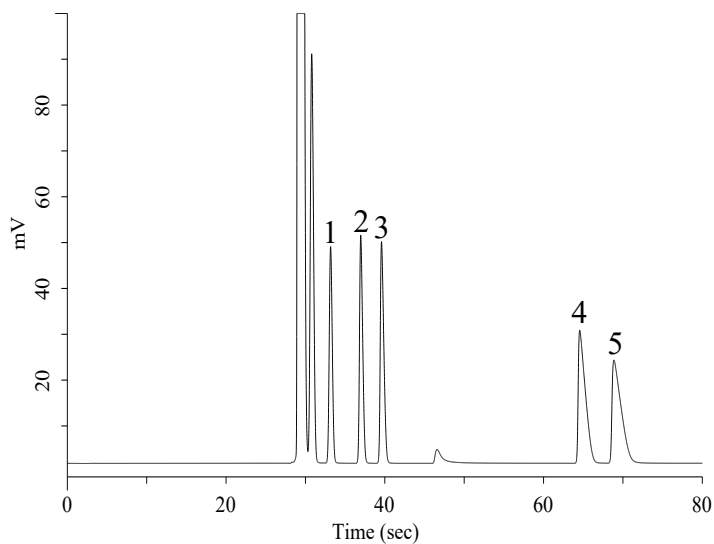
Conditions

System : Micro GC
Column : Molsieve 5A 10 m + BF 3 m
BF Time : 18.7 sec
Column Temp. : 100 °C
Carrier Gas : Ar 170 kPa
Inject Time : 40 msec

Analyte:

1. Hydrogen (H ₂)	5 % (v/v)
2. Oxygen (O ₂)	5 % (v/v)
3. Nitrogen (N ₂)	70 % (v/v)
4. Methane (CH ₄)	5 % (v/v)
5. Carbon monoxide (CO)	5 % (v/v)

Channel 2. PoraPLOT Q



Conditions

System : Micro GC
Column : PoraPLOT Q 10 m
Column Temp. : 100 °C
Carrier Gas : He 190 kPa
Inject Time : 40 msec

Analyte:

1. Carbon dioxide (CO ₂)	2 % (v/v)
2. Ethylene (C ₂ H ₄)	2 % (v/v)
3. Ethane (C ₂ H ₆)	2 % (v/v)
4. Propylene (C ₃ H ₆)	2 % (v/v)
5. Propane (C ₃ H ₈)	2 % (v/v)