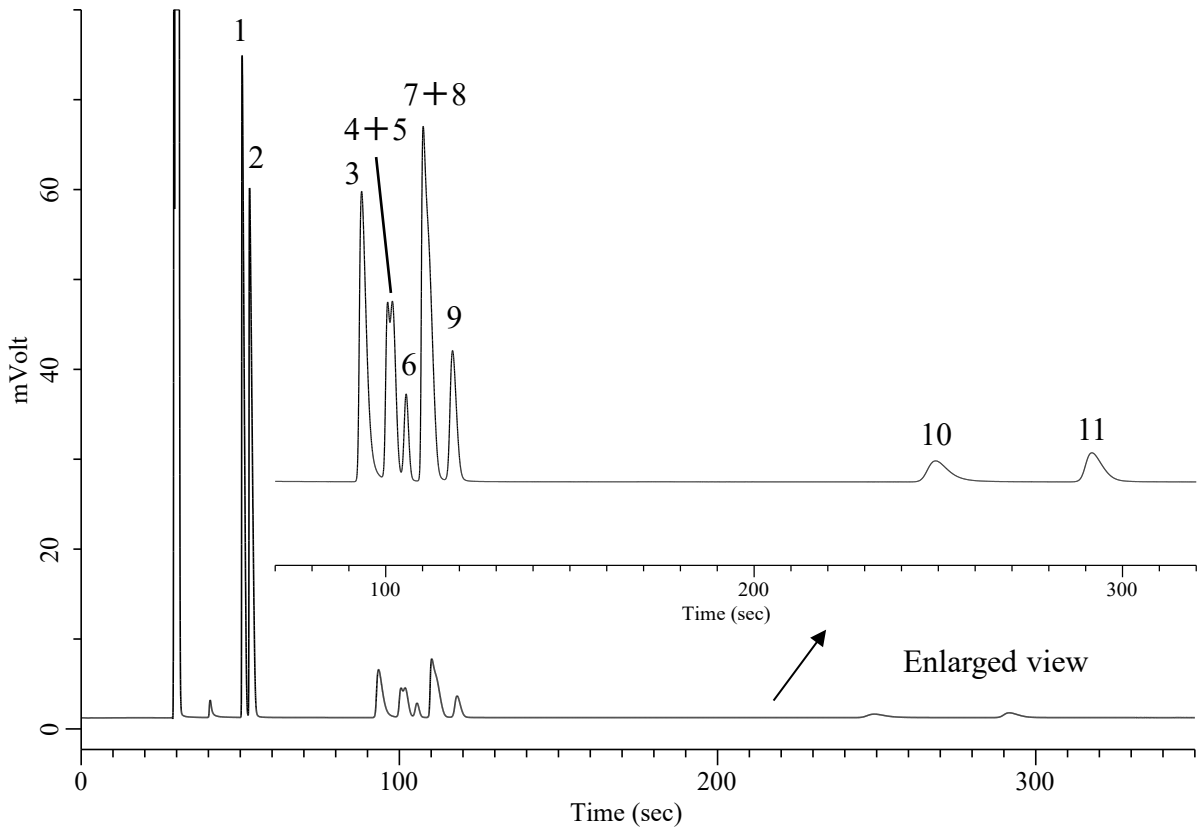


Analysis of Hydrocarbons C3-C5

Specification

One GC Channel



Conditions

System : Micro GC
Column : PoraPLOT Q 10 m
Column Temp. : 120 °C
Carrier Gas : He 190 kPa
Inject Time : 40 msec

Analyte :

1. Propane (C ₃ H ₈)	3.0 % (v/v)
2. Propylene (C ₃ H ₆)	3.0 % (v/v)
3. Isobutane (C ₄ H ₁₀)	0.5 % (v/v)
4. 1-Butene (C ₄ H ₈)	0.2 % (v/v)
5. Isobutene (C ₄ H ₈)	0.2 % (v/v)
6. 1,3-Butadiene (C ₄ H ₆)	0.1 % (v/v)
7. <i>n</i> -Butane (C ₄ H ₁₀)	0.5 % (v/v)
8. <i>trans</i> -2-Butene (C ₄ H ₈)	0.2 % (v/v)
9. <i>cis</i> -2-Butene (C ₄ H ₈)	0.2 % (v/v)
10. Isopentane (C ₅ H ₁₂)	0.1 % (v/v)
11. <i>n</i> -Pentane (C ₅ H ₁₂)	0.1 % (v/v)

Balance Gas CH₄