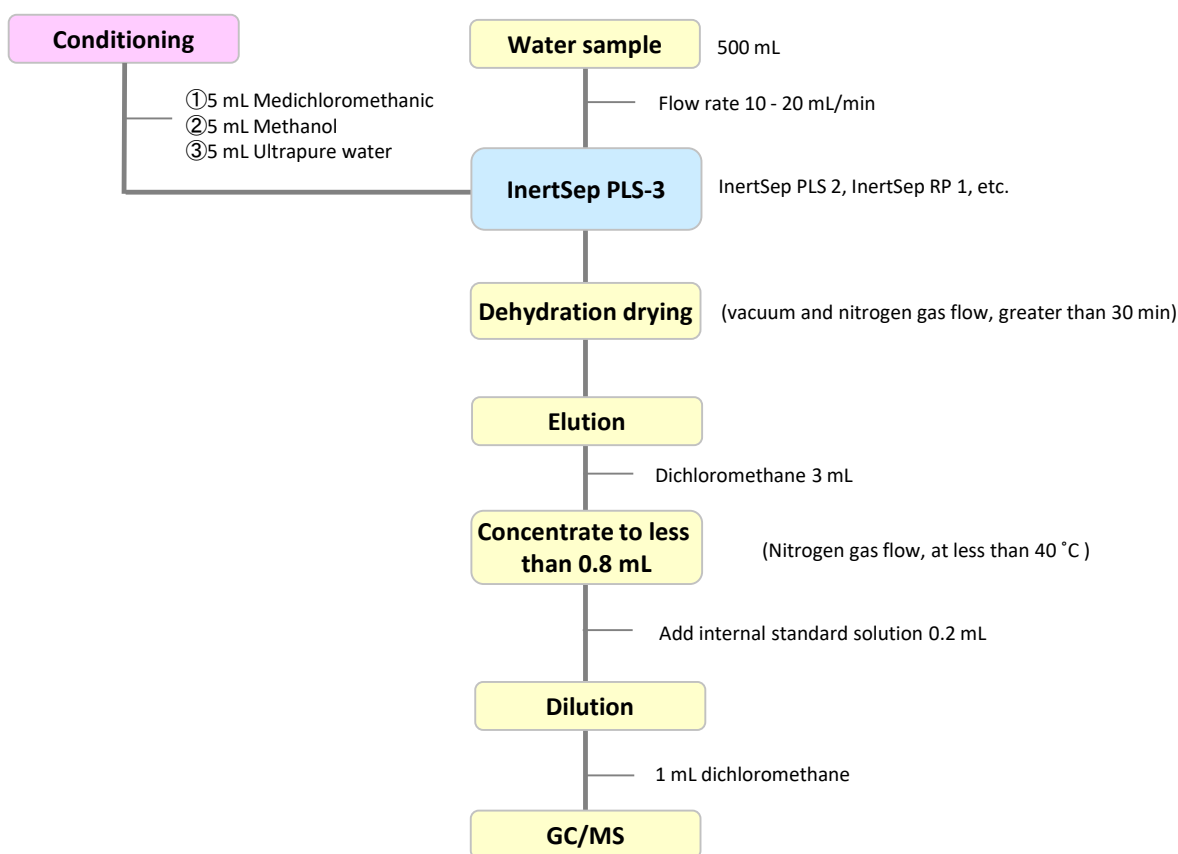


# Analysis of Pesticides in Water (GC/MS Method)

There are currently 120 pesticides identified as target compounds in the management of potable water quality. Because the quantitation of these many pesticide residues is required, various simultaneous analytical methods have been developed. Among these are for pesticides that require solid-phase extraction with a reversed-phase polymer followed by measurement using GC/MS

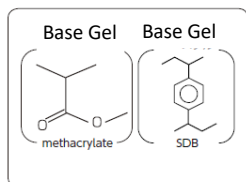
## 1. Flow diagram of solid phase pretreatment



NOTE) This is a method developed by GL Sciences based on literature information.  
Reference: Inspection method for water quality control target setting items (Appendix Method 5)

## 2. Products for Solid-phase extraction

### [InertSep RP-1]



Mean particle size : 70  $\mu\text{m}$   
 Surface Area : 650  $\text{m}^2/\text{g}$   
 Pore volume : 1.5  $\text{mL}/\text{g}$   
 Pore size : 90  $\text{\AA}$   
 PH range of use : 1 - 14

InertSep RP 1 is a polymeric solid phase based on SDB and methacrylate. It is optimal for the enrichment of a wide range of compounds from low to medium high polarity.

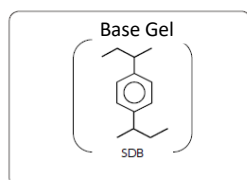
#### Syringe barrel type cartridges

Product name	Column size	Quantity	Cat.No.
InertSep RP-1	250 mg/6 mL	30 bottles	5010-27000
	500 mg/6 mL	30 bottles	5010-27004
	500 mg/12 mL	20 bottles	5010-27005

#### Luer device cartridge

Product name	Column size	Quantity	Cat.No.
InertSep mini RP-1	230 mg	50 bottles	5010-27200
		500 bottles	5010-27220

### [InertSep PLS-2]



Mean particle size : 60  $\mu\text{m}$   
 Surface Area : 600  $\text{m}^2/\text{g}$   
 Pore volume : 1.1  $\text{mL}/\text{g}$   
 Pore size : 70  $\text{\AA}$   
 PH range of use : 1 - 14

InertSep PLS-2 is a cartridge packed with a styrene divinylbenzene polymer gel (SDB) that acts in a reversed-phase mode similar to C18. It has a retention capacity greater than C18 and has excellent stability in a wide pH range .

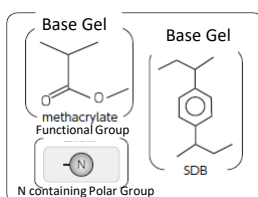
#### Syringe barrel type cartridge

Product name	Column size	Qty.	Cat.No.
InertSep PLS-2	265 mg/6 mL	50 bottles	5010-27430
	265 mg/20 mL	20 bottles	5010-27431
	270 mg/6 mL	50 bottles	5010-25020
	500 mg/6 mL	30 bottles	5010-25025

#### Luer device cartridge

Product name	Column size	Qty.	Cat.No.
InertSep SlimJ PLS-2	230 mg	50 bottles	5010-65720
	265 mg	50 bottles	5010-65721

### [InertSep PLS-3]



Mean particle size : 60  $\mu\text{m}$   
 Surface Area : 600  $\text{m}^2/\text{g}$   
 Pore volume : 1.1  $\text{mL}/\text{g}$   
 Pore size : 70  $\text{\AA}$   
 PH range of use : 1 - 14

InertSep PLS 3 is a polymeric solid phase with N-containing methacrylate and SDB. It has excellent retention for the collection of a wide range of compounds, ranging from highly polar to hydrophobic compounds.

#### Syringe barrel type cartridge

Product name	Column size	Qty.	Cat.No.
InertSep PLS-3	200 mg/6 mL	30 bottles	5010-25050
	200 mg/20 mL	20 bottles	5010-25051
InertSep Glass PLS-3*	200 mg/6 mL	20 bottles	5010-26020

\*:This type is filled into a glass reservoir.

#### Luer device cartridge

Product name	Column size	Qty.	Cat.No.
InertSep SlimJ PLS-3	230 mg	50 bottles	5010-25200
	265 mg	50 bottles	5010-25205

GL Sciences disclaims any and all responsibility for any injury or damage which may be caused by this data directly or indirectly. We reserve the right to amend this information or data at any time and without any prior announcement.

#### GL Sciences, Inc. Japan

22-1 Nishishinjuku 6-Chome  
 Shinjuku-ku, Tokyo,  
 163-1130, Japan  
 Phone: +81-3-5323-6620  
 Fax: +81-3-5323-6621  
 Email: [world@glsc.co.jp](mailto:world@glsc.co.jp)  
 Web: [www.glsciences.com](http://www.glsciences.com)

#### GL Sciences B.V.

De Sleutel 9  
 5652 AS Eindhoven  
 The Netherlands  
 Phone: +31 (0)40 254 95 31  
 Email: [info@glsciences.eu](mailto:info@glsciences.eu)  
 Web: [www.glsciences.eu](http://www.glsciences.eu)

#### GL Sciences (ShangHai) Ltd.

Tower B, Room 2003,  
 Far East International Plaza,  
 NO,317 Xianxia Road,  
 Changning District.  
 Shanghai, China P.C. 200032  
 Phone: +86 (0)21-6278-2272  
 Email: [contact@glsciences.com.cn](mailto:contact@glsciences.com.cn)  
 Web: [www.glsciences.com.cn](http://www.glsciences.com.cn)

#### GL Sciences, Inc. USA

4733 Torrance Blvd. Suite 255  
 Torrance, CA 90503  
 Phone: 310-265-4424  
 Fax: 310-265-4425  
 Email: [info@glsciencesinc.com](mailto:info@glsciencesinc.com)  
 Web: [www.glsciencesinc.com](http://www.glsciencesinc.com)

#### International Distributors

Visit our Website at [www.glsciences.com/distributors](http://www.glsciences.com/distributors)