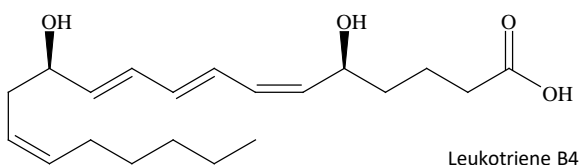


Leukotrienes (Leukotriene) are biologically active compounds synthesized in cells from arachidonic acid by 5-lipoxygenase. Six classes of leukotrienes are involved in bronchial asthma and allergic reactions: LTA4, LTB4, LTC4, LTD4, LTE4, and LTF4. LTB4, in particular, has been measured biochemically because it is a target for labeling in learning the functions of inflammatory response.

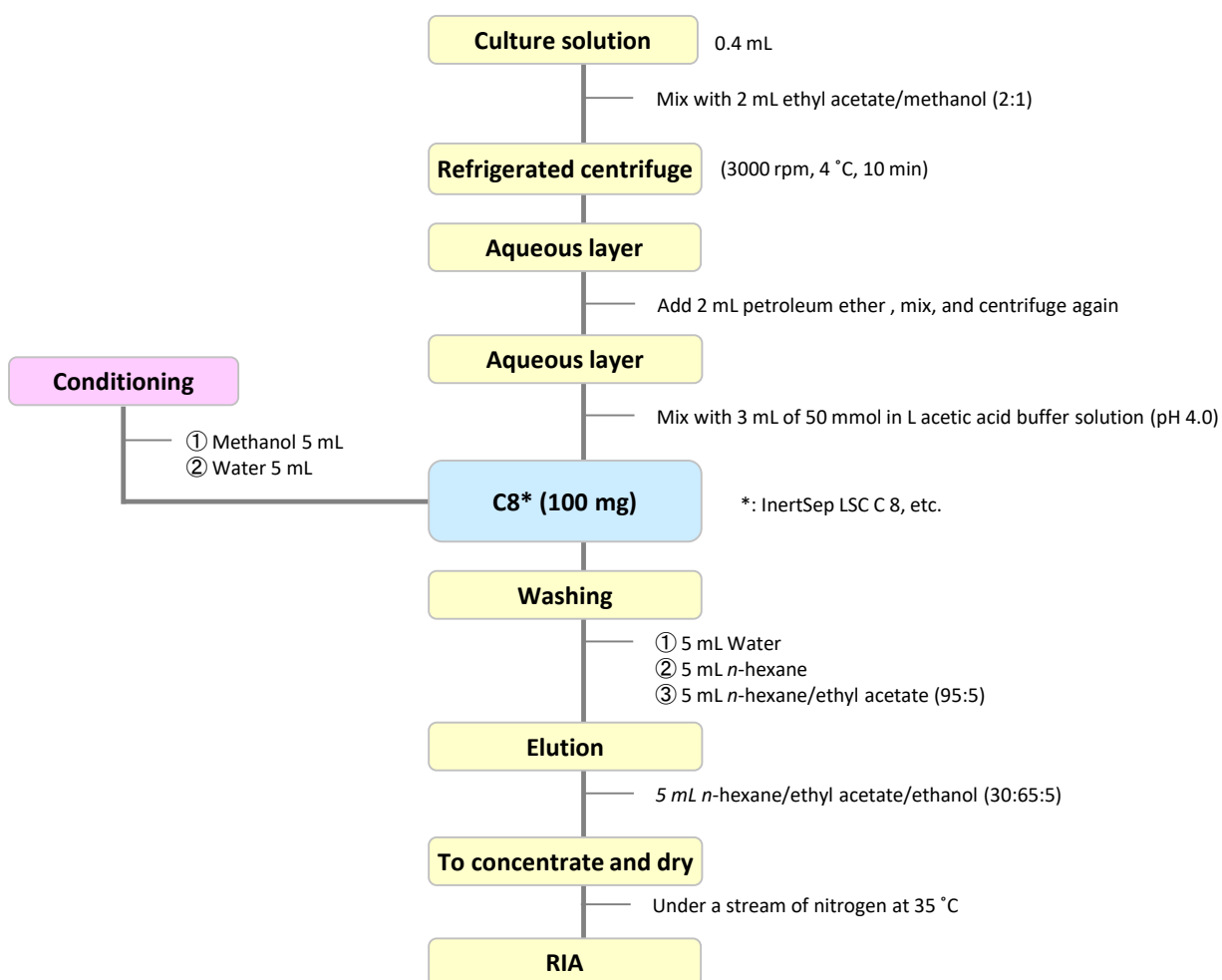
1. Flow diagram of solid phase pretreatment

[Structure of leukotriene B4]



Structures are created using Chemistry 4-D Draw which is provided by ChemInnovation Software, Inc.

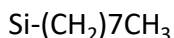
[Example: pretreatment of leukotriene B4]



Reference: Acta Obst Gynaec Jpn., Vol. 42 (1990).

2. Solid-phase extraction-related products

[InertSep C8]



Mean particle size : 60 μm
 Carbon : 12 %
 End-caps : Middle End-Capping
 Surface Area : 450 m^2/g
 Pore volume : 0.7 mL/g
 Pore size : 60 \AA
 PH range of use : 2 - 8

InertSep C8 has an octyl group that is attached to silica gel and is a solid phase with less polar nonpolar interaction than C18. It is suitable for highly hydrophobic compounds that are retained too strongly with C18. Advanced end-capping prevents cation-exchange interactions with silanol groups, resulting in less adsorption of basic compounds.

Large size cartridge LSC

Product name	Column size	Qty.	Cat.No.
InertSep LSC C8	100 mg	50 bottles	5010-63081
	200 mg	50 bottles	5010-63082
	500 mg	50 bottles	5010-63083

Recommendation
for this study

GL Sciences disclaims any and all responsibility for any injury or damage which may be caused by this data directly or indirectly. We reserve the right to amend this information or data at any time and without any prior announcement.

GL Sciences, Inc. Japan

22-1 Nishishinjuku 6-Chome
 Shinjuku-ku, Tokyo,
 163-1130, Japan
 Phone: +81-3-5323-6620
 Fax: +81-3-5323-6621
 Email: world@glsc.co.jp
 Web: www.glsciences.com

GL Sciences B.V.

De Sleutel 9
 5652 AS Eindhoven
 The Netherlands
 Phone: +31 (0)40 254 95 31
 Email: info@glsciences.eu
 Web: www.glsciences.eu

GL Sciences (ShangHai) Ltd.

Tower B, Room 2003,
 Far East International Plaza,
 NO,317 Xianxia Road,
 Changning District.
 Shanghai, China P.C. 200032
 Phone: +86 (0)21-6278-2272
 Email: contact@glsciences.com.cn
 Web: www.glsciences.com.cn

GL Sciences, Inc. USA

4733 Torrance Blvd. Suite 255
 Torrance, CA 90503
 Phone: 310-265-4424
 Fax: 310-265-4425
 Email: info@glsciencesinc.com
 Web: www.glsciencesinc.com

International Distributors

Visit our Website at www.glsciences.com/distributors